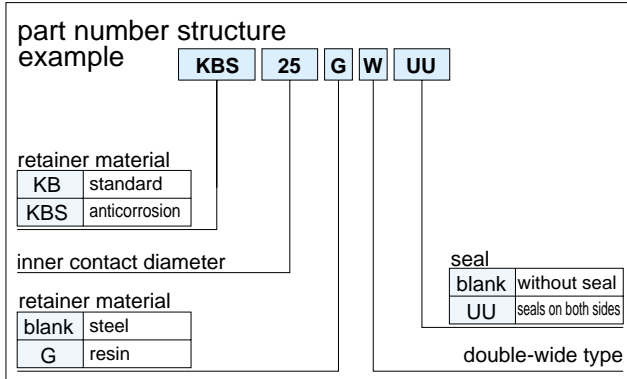
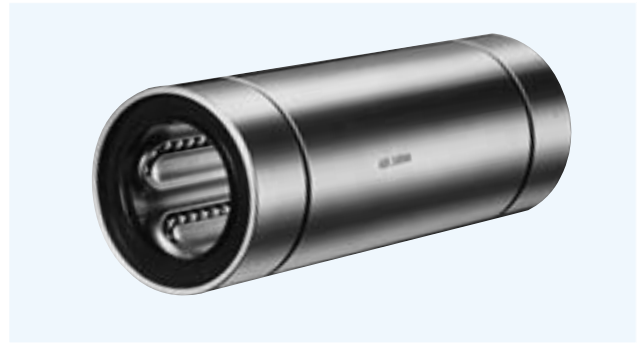


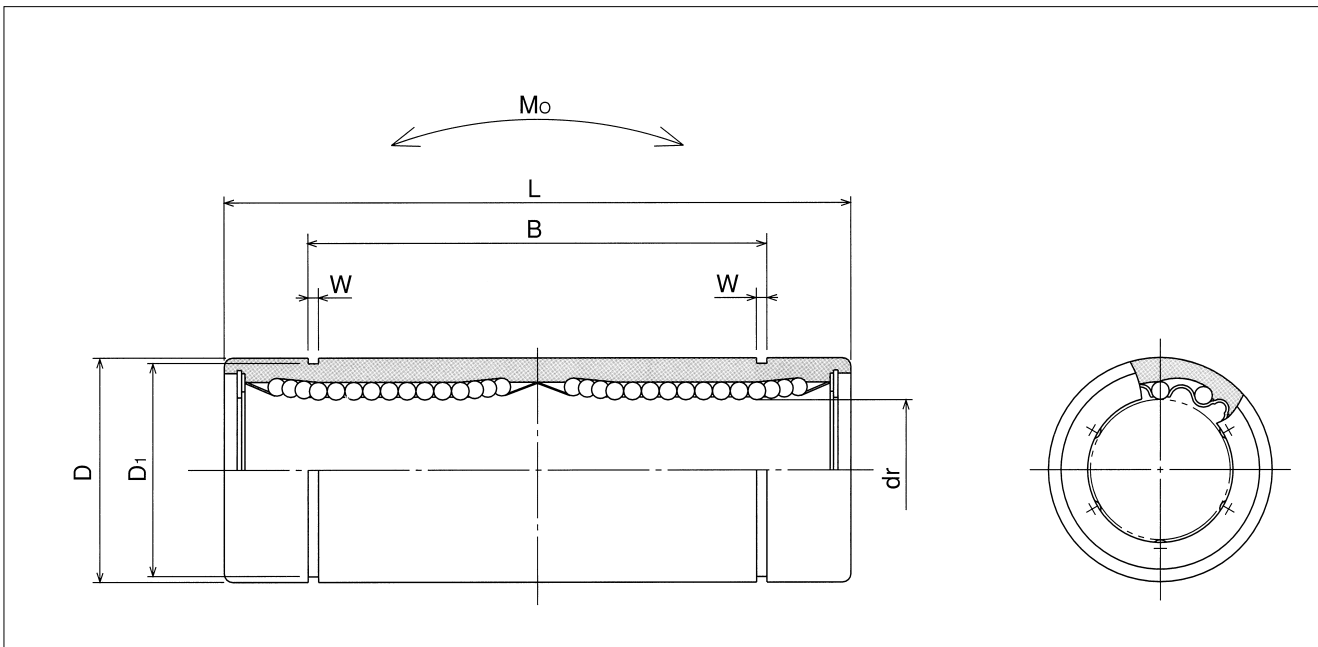
KB-W TYPE

– Double-Wide Type –

This type is a metric dimension series generally used in Europe.



part number				number of ball circuits				
standard		anticorrosion			dr		D	
steel retainer	resin retainer	stainless retainer	resin retainer		mm	tolerance μm	mm	tolerance μm
KB 8W	KB 8GW	KBS 8W	KBS 8GW	4	8	+ 9	16	0/-9
KB12W	KB12GW	KBS12W	KBS12GW	4	12	- 1	22	0
KB16W	KB16GW	KBS16W	KBS16GW	4	16	+11	26	-11
KB20W	KB20GW	KBS20W	KBS20GW	5	20	- 1	32	0
KB25W	KB25GW	KBS25W	KBS25GW	6	25	+13	40	-13
KB30W	KB30GW	KBS30W	KBS30GW	6	30	- 2	47	0
KB40W	KB40GW	KBS40W	KBS40GW	6	40	+16	62	-15
KB50W	KB50GW	KBS50W	KBS50GW	6	50	- 4	75	0/-20
KB60W	KB60GW	KBS60W	KBS60GW	6	60		90	



major dimensions						eccentricity	basic load rating		rated static moment M_o	mass	shaft diameter
	L	B		W	D_1		dynamic C	static C_o			
mm	tolerance mm	mm	tolerance mm	mm	mm	μm	N	N	$N \cdot m$	g	mm
46		33		1.1	15.2	15	421	804	4.3	40	8
61	0	45.8	0	1.3	21		813	1,570	11.7	80	12
68	-0.3	49.8	-0.3	1.3	24.9		921	1,780	14.2	115	16
80		61		1.6	30.5	17	1,370	2,740	25.0	180	20
112		82		1.85	38		1,570	3,140	44.0	430	25
123		104.2		1.85	44.5		2,500	5,490	78.9	615	30
151	0	121.2	0	2.15	59	20	3,430	8,040	147	1,400	40
192	-0.4	155.2	-0.4	2.65	72		6,080	15,900	396	2,320	50
209		170		3.15	86.5		7,550	20,000	487	3,920	60

1N \approx 0.102kgf 1N \cdot m \approx 0.102kgf \cdot m