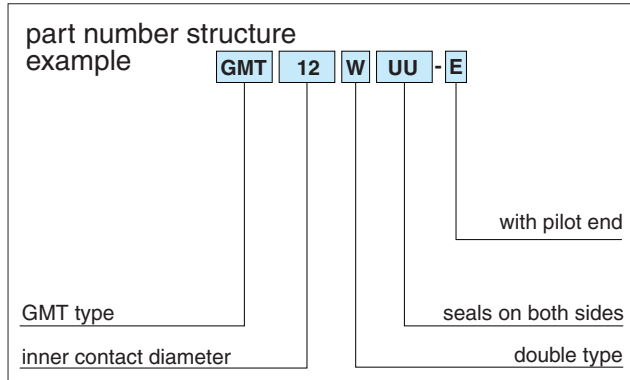
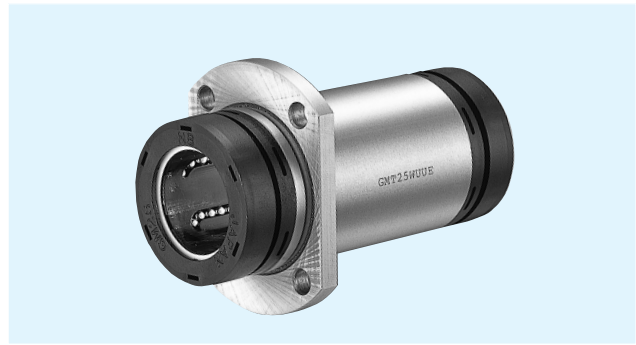


GMT-W-E TYPE

– Two Side Cut Double-Wide Flange Type with pilot end–



part number	number of ball circuits	major dimensions							
		dr		D		L	B	G	E
		mm	tolerance μm	mm	tolerance μm				
GMT 6W UU-E	4	6	0 -10	12	0	28	13.8	7.6	4
GMT 8W UU-E	4	8		15	-13	36	21.1	14.2	4
GMT10W UU-E	4	10		19	0 -16	41	24.2	15.4	4
GMT12W UU-E	4	12		21		46	30.2	22.4	4
GMT13W UU-E	4	13		23		48	30.65	21.3	4
GMT16W UU-E	4	16		28	53	33.3	22.6	5	
GMT20W UU-E	6	20	0 -12	32	0	65	44.2	33.4	5
GMT25W UU-E	6	25		40		91	65.5	50.0	5
GMT30W UU-E	6	30		45	-19	99	69.3	52.6	5

Both side of flange are reference plane.

