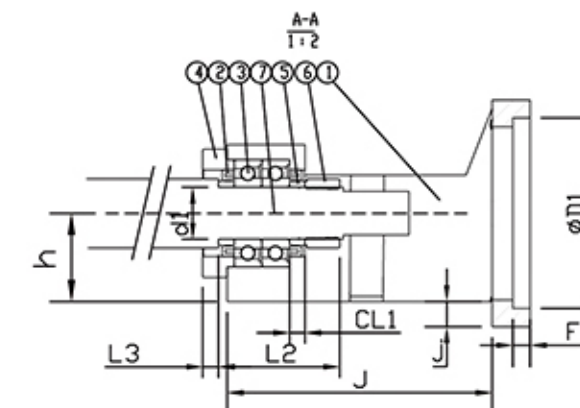
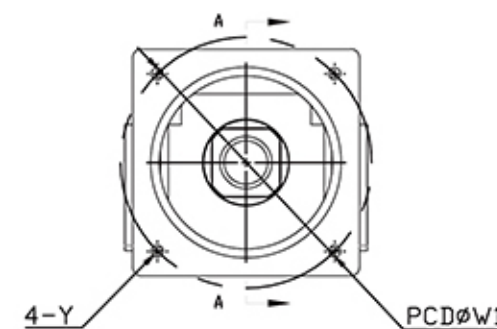
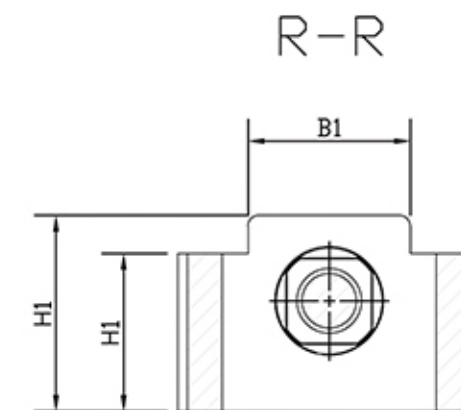
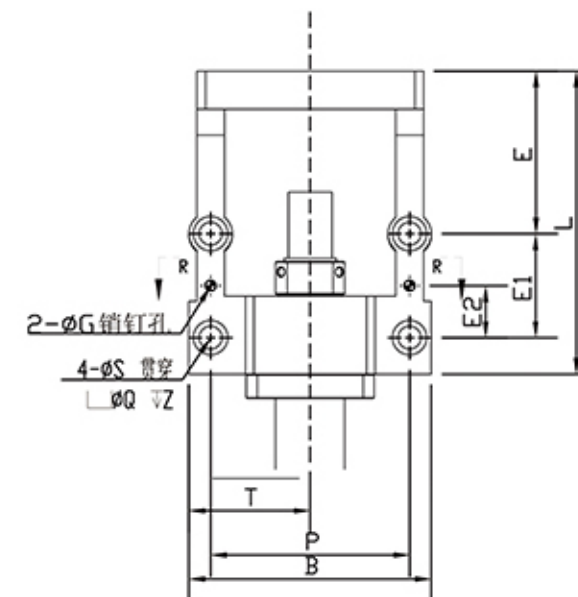


HM20-130 系列  
HM25-130 系列  
HM30-130 系列

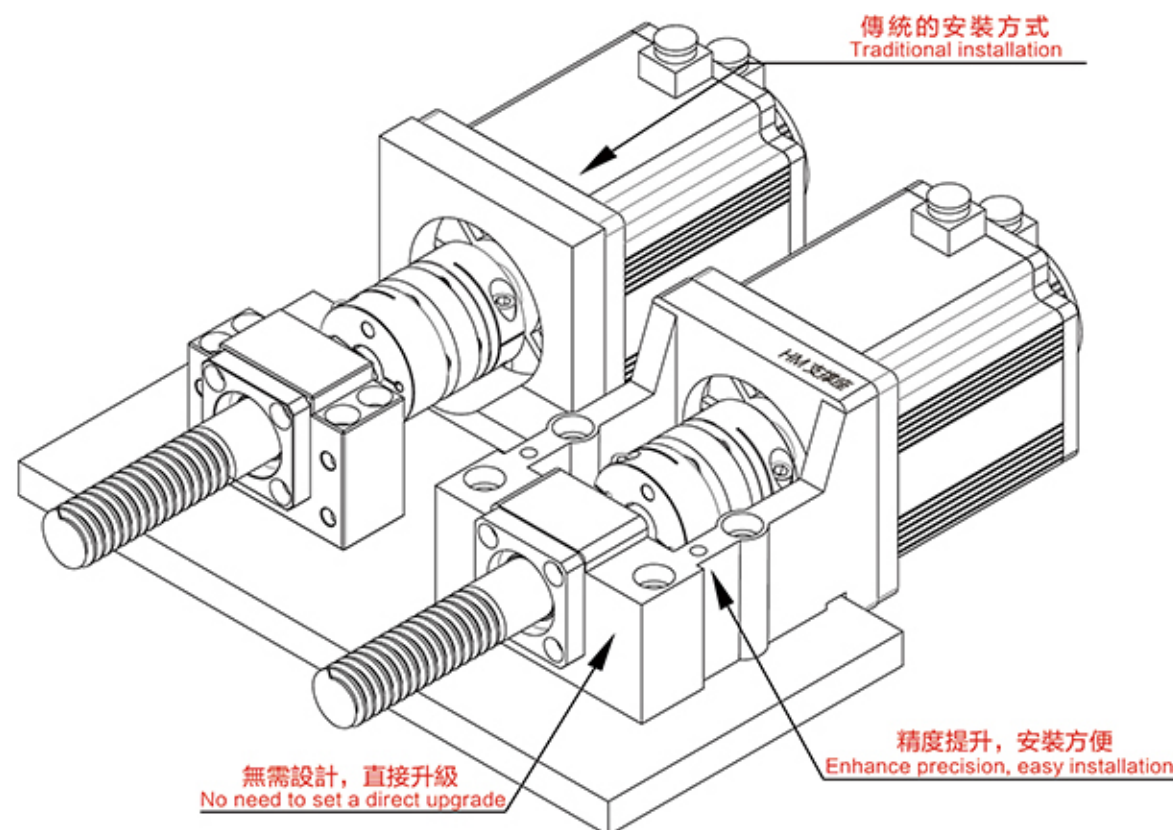
項目號 Numbering	部件名稱/ Part Name	數量 Quantity
1	傳動座主體/Housing	1
2	骨架油封/Simmerrings	2
3	角接觸軸承 Angular contact bearings	1組
4	壓蓋/Gland	1
5	頂圈/Top ring	2
6	鎖緊螺母 locknut	1組



特点/Feature

支座組件已安裝,無需再配固定側,安裝簡易化,因此馬達的組裝可通過嵌入部簡單定位..軸心精度良好: 在構造上,滾珠絲杠側和馬達側的安裝部形成一體,可抑制兩軸的軸心偏差.專業為伺服、步進電機設計。

Carriage assembly is installed without adding the fixed side, ease of installation, thus assembly of the motor can be easily positioned by the embedding section .. good axis accuracy: in construction, installation side and motor side ball screw portion formed integrally, inhibit two shaft axis deviation, professional servo, stepper motor design.



選型尺寸表 / Selecyn Size Chart

單位: mm

型號 Model	D1	W1	Y	L	h0.02	B	P	T	軸徑d1	CL1	L2	L3	H	H1	B1
HM20-130	110	145	M8	150	34	106	85	53	20	8	57	4	66	56	64
HM25-130	110	145	M8	165	48	140	115	70	25	9	63	6	80	71	65
HM30-130	110	145	M8	175	51	140	115	70	30	9	70	9	88	74	77

型號 Model	S	Q	Z	E	E1	E2	G	F	j	J	重量 weight	軸承型號 Bearing Type	支持端 End support	聯軸器 Coupling
HM20-130	11	17	12	70	60	30	6	10	31	128	4.5	7004	BF20	40-50Ø17-22
HM25-130	13	20	10	84	60	30	8	10	18	143	6.5	7205	BF25	45-66Ø20-22
HM30-130	13	20	10	94	60	30	8	10	14	153	6.8	7206	BF30	55-70Ø25-22

備註:

1.使用之軸承經預壓處理,軸向0間隙(All types make preload)

2.軸承採用P5配對組裝,最適宜滾珠螺桿使用。

(Bearing P5 pairing assembled using the most appropriate ball screw.)