

## HM12-57-V 系列

## HM12-60-V 系列

項目號 Numbering	部件名稱/ Part Name	數量 Quantity
1	傳動座主體/Housing	1
2	壓蓋/Gland	1
3	頂圈/Top ring	2
4	骨架油封/Simmerrings	2
5	鎖緊螺母 locknut	1組
6	角接觸軸承 Angular contact bearings	1組

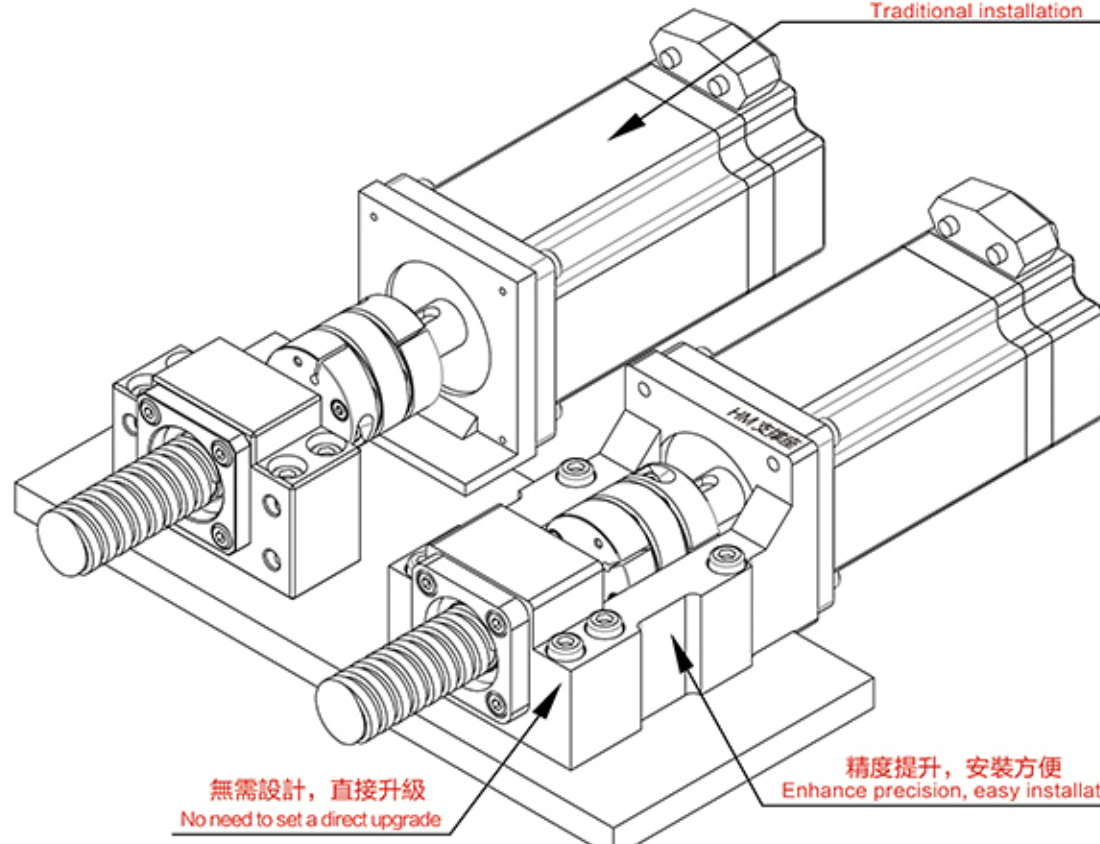


### 特点/Feature

支座組件已安裝，無需再配固定側，安裝簡易化，因此馬達的組裝可通過嵌入部簡單定位。軸心精度良好：在構造上，滾珠絲杠側和馬達側的安裝部形成一體，可抑制兩軸的軸心偏差。專業為伺服、步進電機設計。

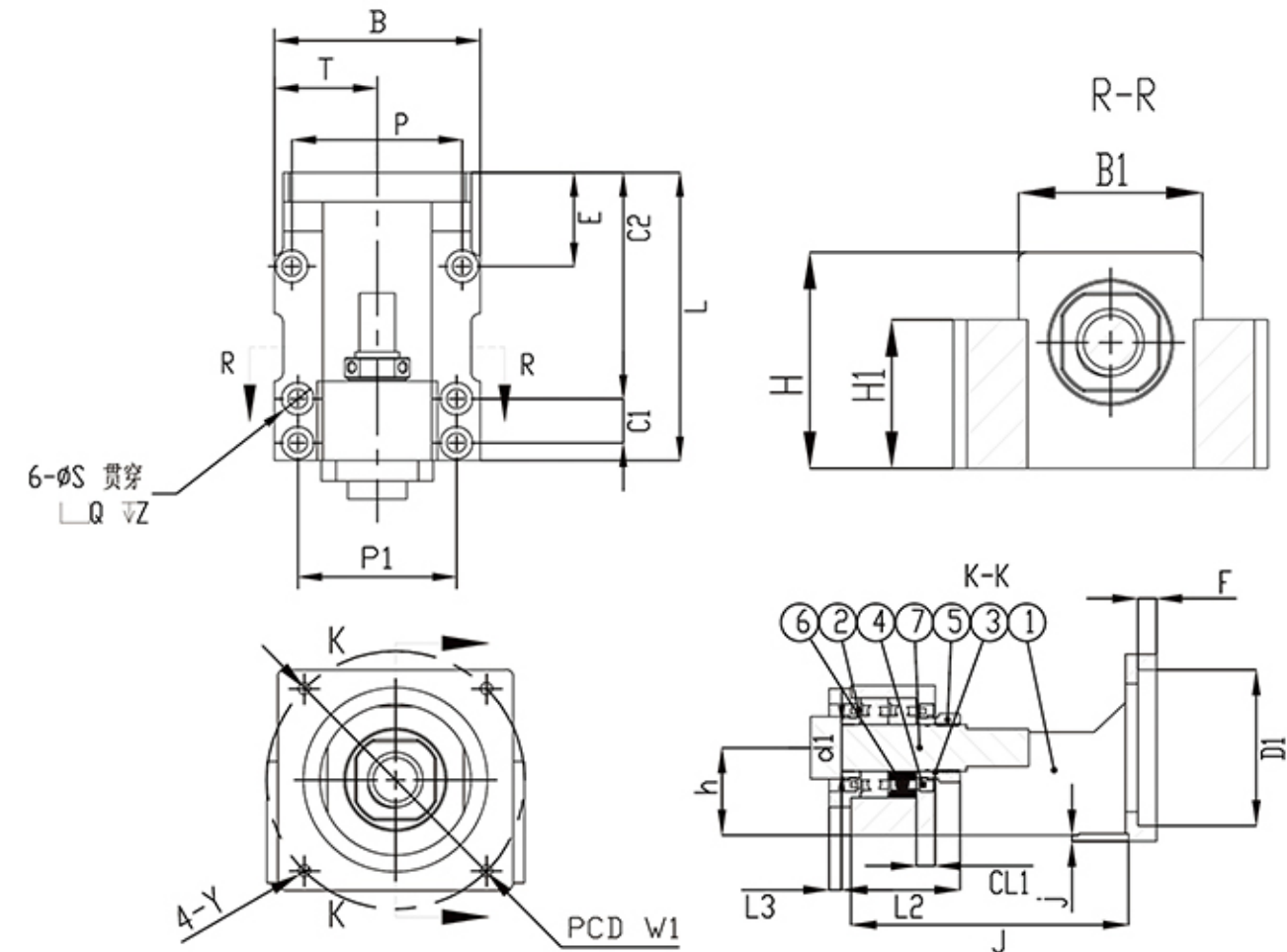
Carriage assembly is installed without adding the fixed side, ease of installation, thus assembly of the motor can be easily positioned by the embedding section .. good axis accuracy: in construction, installation side and motor side ball screw portion formed integrally, inhibit two shaft axis deviation. professional servo, stepper motor design.

傳統的安裝方式  
Traditional installation



無需設計，直接升級  
No need to set a direct upgrade

精度提升，安裝方便  
Enhance precision, easy installation



選型尺寸表 / Selecyn Size Chart

單位: mm

型號 Model	D1	W1	Y	L	h0.02	B	P	P1	T	軸徑d1	CL1	L2	L3	H	H1	B1
HM12-57-V	38.1	66.7	M4	98	25	70	58	54	35	15	6	38	3	44	29	41
HM12-60-V	50	70	M4	98	25	70	58	54	35	15	6	38	3	44	29	41

型號 Model	S	Q	Z	E	C1	C2	F	J	j	重量 weight	軸承型號 Bearing Type	支持端 End support	聯軸器 Coupling
HM12-57-V	6.6	11	1	32	15	77	6	89	2	0.35	7001	BF12	30-42 Ø10-8
HM12-60-V	6.6	11	1	32	15	77	6	89	2	0.35	7001	BF12	30-42 Ø10-14

備註:

1. 使用之軸承經預壓處理，軸向0間隙(All types make preload)

2. 軸承採用P5配對組裝，最適宜滾珠螺桿使用。

(Bearing P5 pairing assembled using the most appropriate ball screw.)