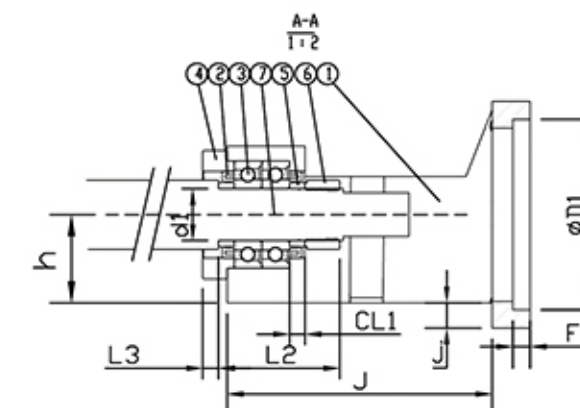
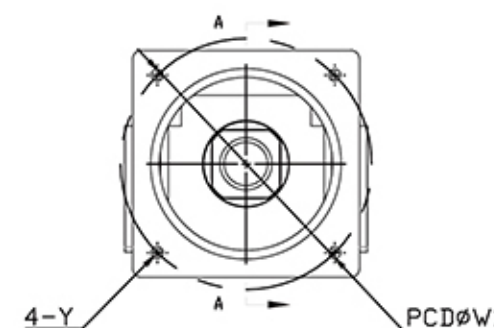
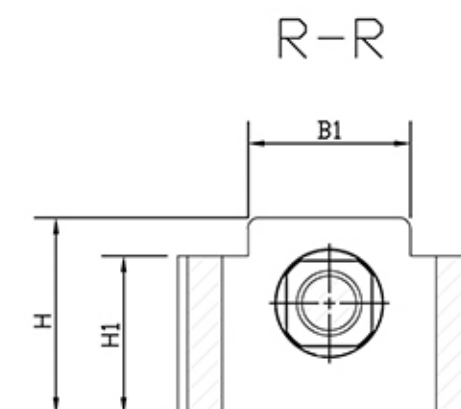
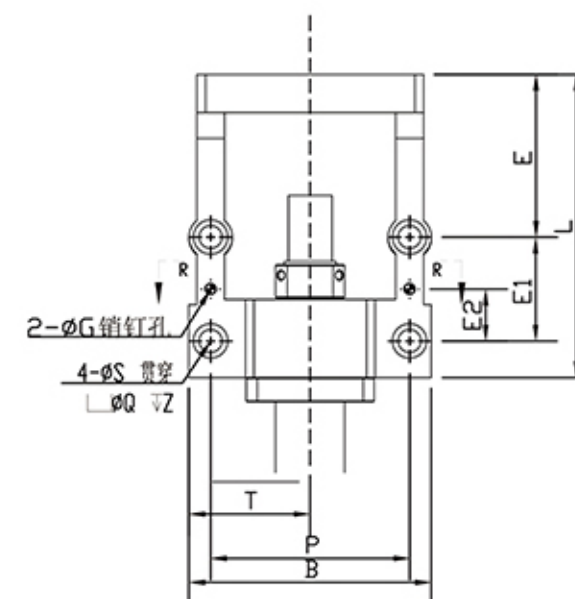


HM35-130 系列  
HM35-180 系列  
HM40-180 系列

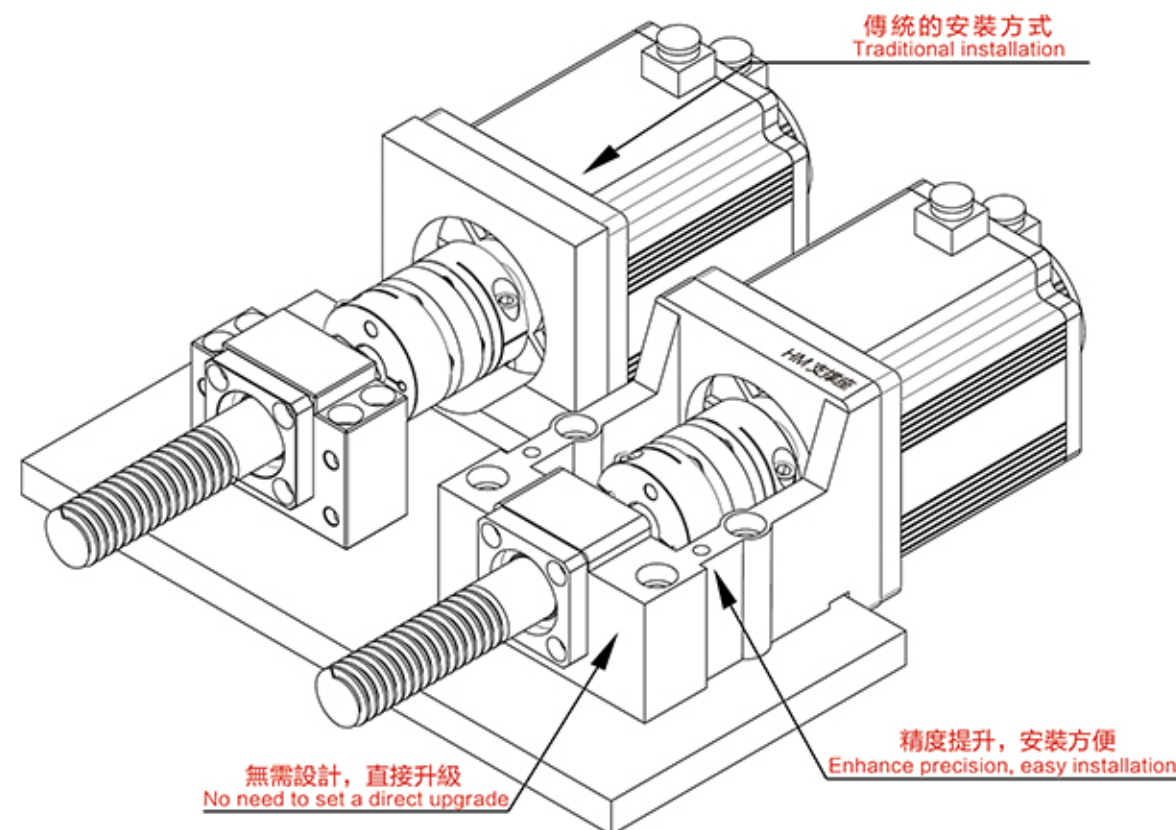
項目號 Numbering	部件名稱/ Part Name	數量 Quantity
1	傳動座主體/Housing	1
2	骨架油封/Simmerrings	2
3	角接觸軸承 Angular contact bearings	1組
4	壓蓋/Gland	1
5	頂圈/Top ring	2
6	鎖緊螺母 locknut	1組



特点/Feature

支座組件已安裝,無需再配固定側,安裝簡易化,因此馬達的組裝可通過嵌入部簡單定位..軸心精度良好:在構造上,滾珠絲杠側和馬達側的安裝部形成一體,可抑制兩軸的軸心偏差.專業為伺服、步進電機設計。

Carriage assembly is installed without adding the fixed side, ease of installation, thus assembly of the motor can be easily positioned by the embedding section .. good axis accuracy: in construction, installation side and motor side ball screw portion formed integrally, inhibit two shaft axis deviation. professional servo, stepper motor design.



選型尺寸表 / Selecyn Size Chart

單位: mm

型號 Model	D1	W1	Y	L	h0.02	B	P	T	軸徑d1	CL1	L2	L3	H	H1	B1
HM35-130	110	145	M8	213	52	140	115	70	35	20	74	10	96	79	88
HM35-180	1143	200	M12	229	52	180	130	80	35	20	78	10	96	79	88
HM40-180	1143	200	M12	229	52	180	130	80	40	20	74	10	96	79	88

型號 Model	S	Q	Z	E	E1	E2	G	F	J	重量 weight	軸承型號 Bearing Type	支持端 End support	聯軸器 Coupling
HM35-130	14	20	13	94	80	40	8	10	191	15	35TAC/72B	BF35	55-85
HM35-180	18	26	14	80	110	55	10	20	197	18	35TAC/72B	BF35	68-94
HM40-180	18	26	14	80	110	55	10	20	187	22	40TAC/72B	AF40	68-94

備註:

1.使用之軸承經預壓處理,軸向0間隙(All types make preload)

2.軸承採用P5配對組裝,最適宜滾珠螺桿使用.

(Bearing P5 pairing assembled using the most appropriate ball screw.)