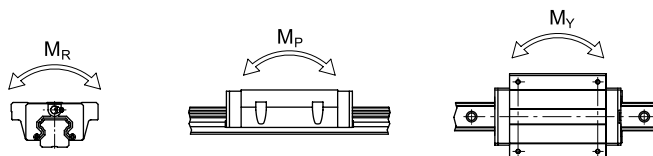
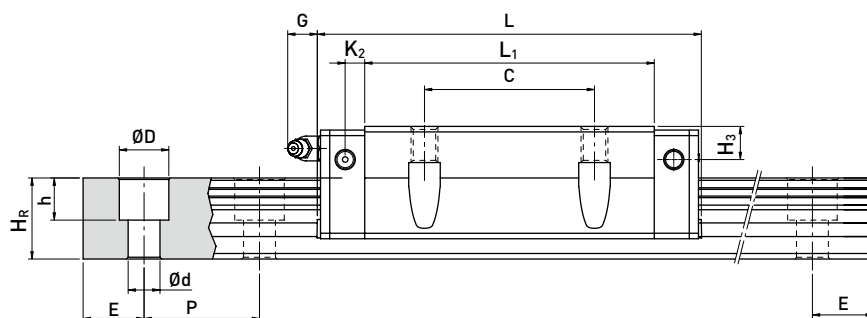
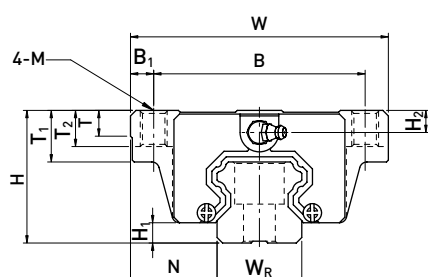


重负荷型滚珠线性滑轨

Technical drawing of a 4x4 grid of plates. The drawing shows a top-down view of the assembly. The plates are arranged in a 4x4 grid. The top plate has two circular features, each with a crosshair. The bottom plate also has two circular features with crosshairs. The middle two plates have a single circular feature with a crosshair on each side. A dimension line labeled 'K1' indicates the distance between the two circular features on the top plate. On the left side, there is a vertical plate with a handle-like feature. On the right side, there is a vertical plate with a circular feature. The drawing is a technical illustration of a mechanical assembly.



型号	组件尺寸 (mm)			滑块尺寸 (mm)															导轨尺寸 (mm)								导轨 的固定 螺栓尺寸	基本 动额定 负荷	基本 静额定 负荷	容许静力矩			重量	
																														M _R	M _P	M _Y		
	H	H ₁	N	W	B	B ₁	C	L ₁	L	K ₁	K ₂	G	M	T	T ₁	T ₂	H ₂	H ₃	W _R	H _R	D	h	d	P	E	(mm)	C(kN)	C ₀ (kN)	kN·m	kN·m	kN·m	滑块 kg	导轨 kg/m	
HGW 15CC	24	4.3	16	47	38	4.5	30	39.4	61.4	8	4.85	5.3	M5	6	8.9	6.95	3.95	3.7	15	15	7.5	5.3	4.5	60	20	M4x16	14.7	23.47	0.12	0.10	0.10	0.17	1.45	
HGW 20CC	30	4.6	21.5	63	53	5	40	50.5	77.5	10.25	6	12	M6	8	10	9.5	6	6	20	17.5	9.5	8.5	6	60	20	M5x16	27.1	36.68	0.27	0.20	0.20	0.40	2.21	
HGW 20HC								65.2	92.2	17.6																M5x16	32.7	47.96	0.35	0.35	0.35	0.52		
HGW 25CC	36	5.5	23.5	70	57	6.5	45	58	84	10.7	6	12	M8	8	14	10	6	5	23	22	11	9	7	60	20	M6x20	34.9	52.82	0.42	0.33	0.33	0.59	3.21	
HGW 25HC								78.6	104.6	21																M6x20	42.2	69.07	0.56	0.57	0.57	0.80		
HGW 30CC	42	6	31	90	72	9	52	70	97.4	14.25	6	12	M10	8.5	16	10	6.5	10.8	28	26	14	12	9	80	20	M8x25	48.5	71.87	0.66	0.53	0.53	1.09	4.47	
HGW 30HC								93	120.4	25.75																M8x25	58.6	93.99	0.88	0.92	0.92	1.44		
HGW 35CC	48	7.5	33	100	82	9	62	80	112.4	14.6	7	12	M10	10.1	18	13	9	12.6	34	29	14	12	9	80	20	M8x25	64.6	93.88	1.16	0.81	0.81	1.56	6.30	
HGW 35HC								105.8	138.2	27.5																M8x25	77.9	122.77	1.54	1.40	1.40	2.06		
HGW 45CC	60	9.5	37.5	120	100	10	80	97	139.4	13	10	12.9	M12	15.1	22	15	8.5	20.5	45	38	20	17	14	105	22.5	M12x35	103.8	146.71	1.98	1.55	1.55	2.79	10.41	
HGW 45HC								128.8	171.2	28.9																M12x35	125.3	191.85	2.63	2.68	2.68	3.69		
HGW 55CC	70	13	43.5	140	116	12	95	117.7	166.7	17.35	11	12.9	M14	17.5	26.5	17	12	19	53	44	23	20	16	120	30	M14x45	153.2	211.23	3.69	2.64	2.64	4.52	15.08	
HGW 55HC								155.8	204.8	36.4																M14x45	184.9	276.23	4.88	4.57	4.57	5.96		
HGW 65CC	90	15	53.5	170	142	14	110	144.2	200.2	23.1	14	12.9	M16	25	37.5	23	15	15	63	53	26	22	18	150	35	M16x50	213.2	287.48	6.65	4.27	4.27	9.17	21.18	
HGW 65HC								203.6	259.6	52.8																M16x50	277.8	420.17	9.38	7.38	7.38	12.89		

注：1 kgf = 9.81 N