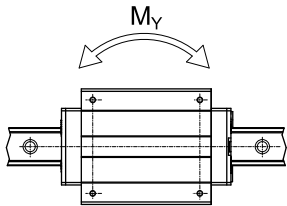
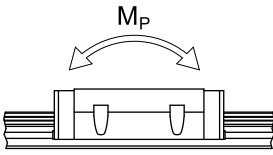
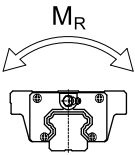
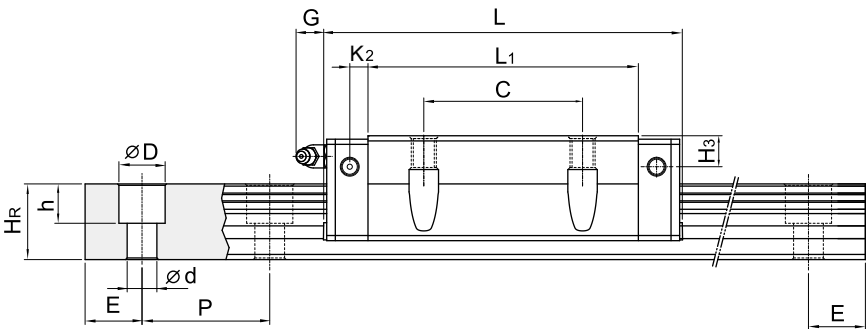
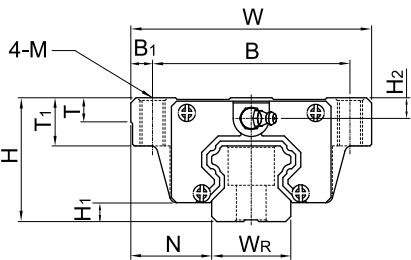
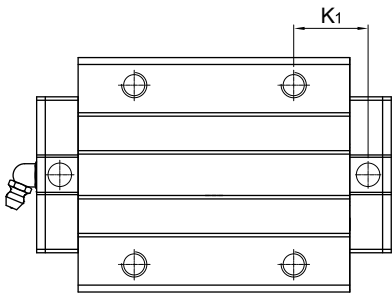


QH系列
静音式重负荷型滚珠线性滑轨

(2) QHW-CA / QHW-HA



型号	组件尺寸 (mm)			滑块尺寸 (mm)																导轨尺寸(mm)								导轨的 固定螺 柱尺寸	基本 动额 定负荷	基本 静额 定负荷	容许静力矩			重量	
	H	H ₁	N	W	B	B ₁	C	L ₁	L	K ₁	K ₂	G	M	T	T ₁	H ₂	H ₃	W _R	H _R	D	h	d	P	E	(mm)	C(kN)	C ₀ (kN)	M _R kN-m	M _P kN-m	M _V kN-m	滑块 kg	导轨 kg/m			
QHW15CA	24	4	16	47	38	4.5	30	39.4	61.4	8	5	5.3	M5	6	8.9	3.95	4.2	15	15	7.5	5.3	4.5	60	20	M4x16	17.94	19.86	0.1	0.08	0.08	0.17	1.45			
QHW20CA	30	4.6	21.5	63	53	5	40	50.5	76.7	9.75	6	12	M6	8	10	6	6	20	17.5	9.5	8.5	6	60	20	M5x16	35.26	33.86	0.26	0.19	0.19	0.40	2.21			
QHW20HA								65.2	91.4	17.1																42.52	42.31	0.31	0.27	0.27	0.52				
QHW25CA	36	5.5	23.5	70	57	6.5	45	58	83.4	10.7	6	12	M8	8	14	6	5	23	22	11	9	7	60	20	M6x20	41.9	48.75	0.39	0.31	0.31	0.59	3.21			
QHW25HA								78.6	104	21																50.61	60.94	0.5	0.45	0.45	0.80				
QHW30CA	42	6	31	90	72	9	52	70	97.4	13.5	6.25	12	M10	8.5	16	6.5	6	28	26	14	12	9	80	20	M8x25	58.26	66.34	0.6	0.5	0.5	1.09	4.47			
QHW30HA								93	120.4	25.75																70.32	88.45	0.83	0.89	0.89	1.44				
QHW35CA	48	7.5	33	100	82	9	62	80	113.6	13	7.5	12	M10	10.1	18	8.5	6.5	34	29	14	12	9	80	20	M8x25	78.89	86.66	1.07	0.76	0.76	1.56	6.30			
QHW35HA								105.8	139.4	25.9																95.23	115.55	1.45	1.33	1.33	2.06				
QHW45CA	60	9.2	37.5	120	100	10	80	97	139.4	13	10	12.9	M12	15.1	22	8.5	10	45	38	20	17	14	105	22.5	M12x35	119.4	135.42	1.83	1.38	1.38	2.79	10.41			
QHW45HA								128.8	171.2	28.9																144.13	180.56	2.47	2.41	2.41	3.69				

注：1 kgf = 9.81 N