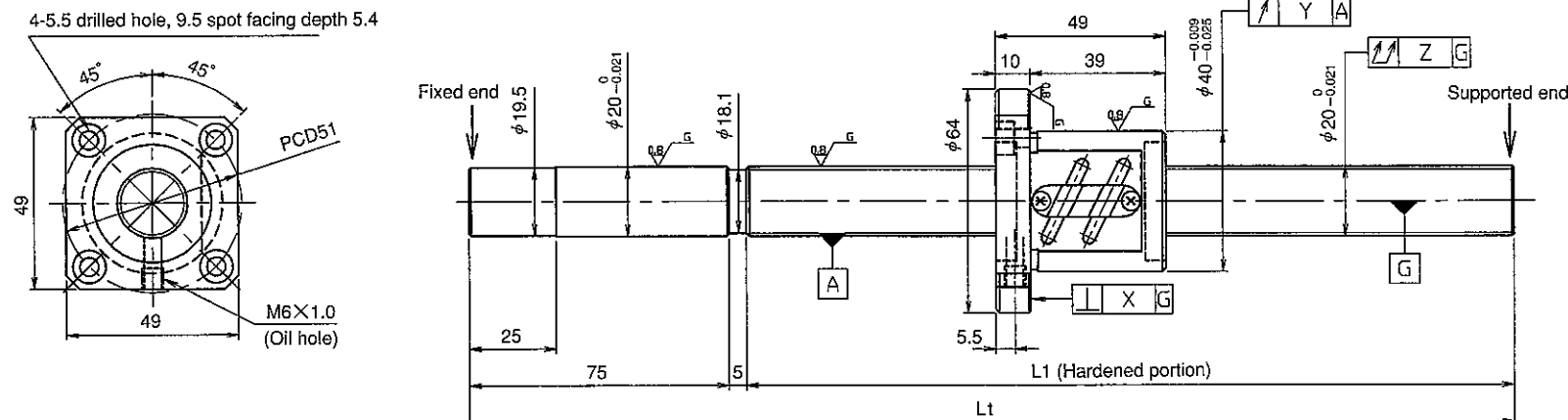


KURODA Standard Ground Ball Screw : GE Series (Accuracy grade C7)/GG Series (Accuracy grade C5)

UNFINISHED SHAFT ENDS

Screw shaft diameter $\phi 20$, Lead 4

(Unit : mm)



Notation of standard ground ball screw

● Standard length shaft without end machining

GE2004ES-AALR-□□□□A

GG2004ES-AALR-□□□□A

● With end machining specified on your drawing

GE2004ES-□A□R-□□□□X□□□□-C7M

GG2004ES-□A□R-□□□□X□□□□-C5□

Overall length Thread length

Model No.	Axial clearance	L ₁	L _t	X	Y	Z	Preload torque (N・cm)	Lead accuracy			Wiper	Mass (kg)
								±Ec	ec	e300		
GE2004ES-AALR-0605A	~0.030 (M)	525	605	0.018	0.030	0.110	—	0.05	—	—	Lip seal	1.95
GE2004ES-AALR-1005A		925	1005			0.210		0.05	—	—		2.95
*GG2004ES-AALR-0605A	~0.005 (F)	525	605	0.011	0.015	0.075	~3.0	0.030	0.023	0.018		1.95
*GG2004ES-AALR-1005A		925	1005			0.150		0.040	0.027			2.95

• JIS B 1192-1987 (GG series) applies to accuracy standard values shown in the above-mentioned table.

• Support unit : BUK-15A (BUK-15F, BUK-15S) and BUM-15 is recommended. (Refer to P.398)

• Product with axial clearance ~0.005 (F) shown in the table may be partially preloaded.

• Preload torque shown in the table is a value before greasing.

• The grease is contained inside of nut only at the time of delivery. When using it, apply lubricant.

• For asterisked * model with unworked shaft ends equivalent to lead accuracy grade C3, contact KURODA.

Table of optional specifications for each model

Series	Additional machining of shaft end	Axial clearance adjustment (Note 2)	Surface treatment (Note 1)	Difference of grease	Direction of nut	Wiper removal
GE	○	×	○	○	○	○
GG	○	○	○	○	○	○

(Note 1) The above-mentioned surface treatment is LD treatment (coating thickness : 1 to 2 μ m).

(Note 2) For axial clearance adjustment for GG series, contact KURODA.

Ball screw specifications

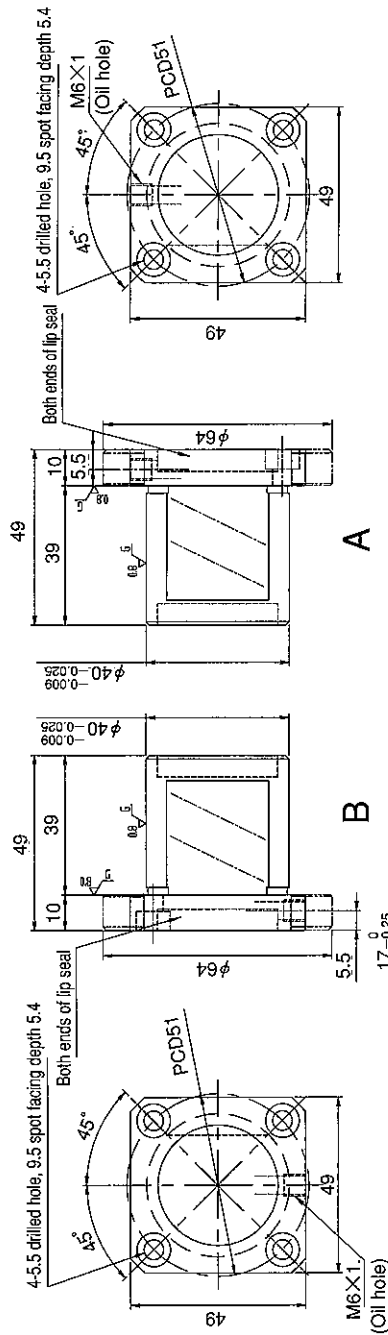
Screw shaft dia.	20	Axial clearance	~0.030 (M) ~0.005 (F)
Lead	4	Basic dynamic load rating	8600N
Thread direction	Right-hand	Basic static load rating	23400N
Number of circuits	2.5turn 2circuit	Spacer ball	—
Ball diameter	2.3812	Lubricant	Alvania Grease No.2

(Unit : mm)

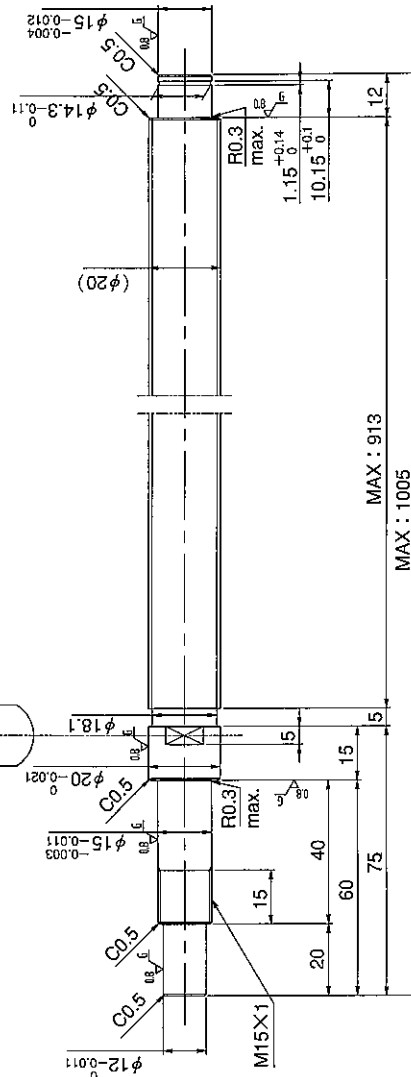
GE2004ES-AALR-

GG2004ES-AALR-

			X	-C5	
--	--	--	---	-----	--



Select the orientation of nut flange by circling A or B.
No marking means "B" orientation as default.



Applicable Support Unit

Direct mount : BUK-15A (Fixed end unit-Supported end unit) Refer to Page.406

Circle flange : BUM-15 (Fixed end unit + Supported end bearing) Refer to Page.413

Company Name		
Telephone		Name of Person in Charge
Company Address		

Refer to page 24 for NOTATION OF MODEL NUMBER.