

SHAFT END FINISH ORDERING SHEET

Screw shaft diameter $\phi 15$, Lead 10

(Unit : mm)

GE1510DS-BALR-

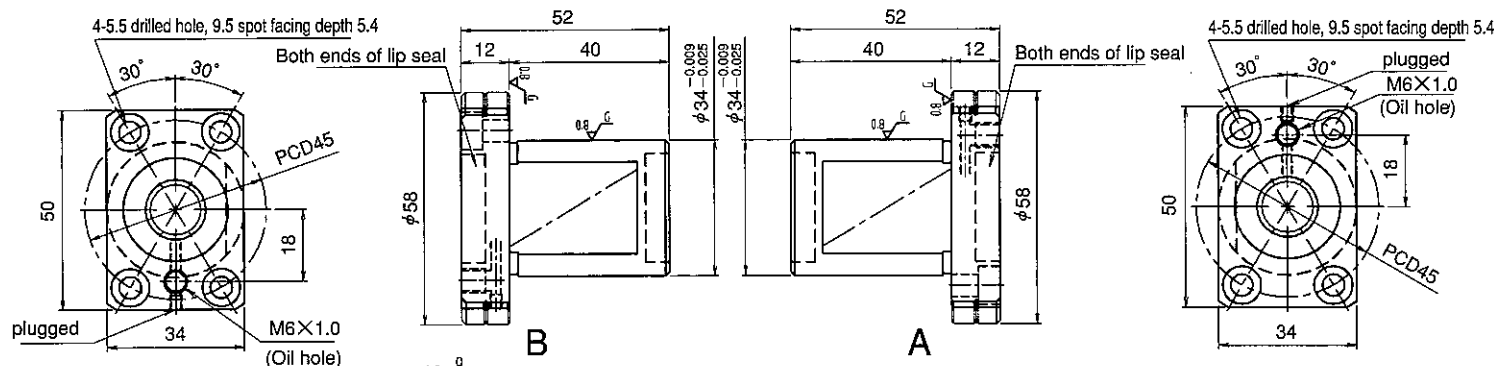
 X

 -C7M
GG1510DS-BALR-

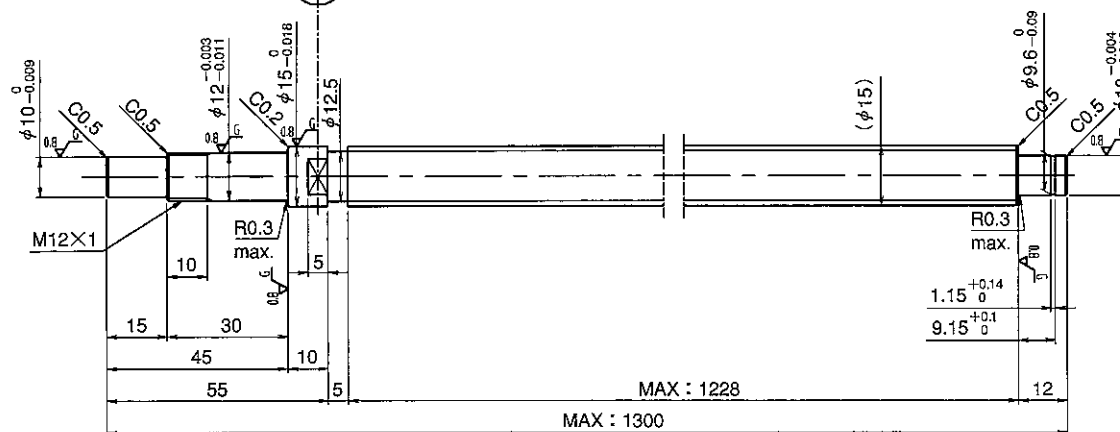
 X

 -C5

--



Select the orientation of nut flange by circling A or B.
No marking means "B" orientation as default.



Applicable Support Unit

Direct mount : BUK-12A (Fixed end unit+Supported end unit) Refer to Page.405

Circle flange : BUM-12 (Fixed end unit+Supported end bearing) Refer to Page.412

Company Name		
Telephone		Name of Person in Charge
Company Address		