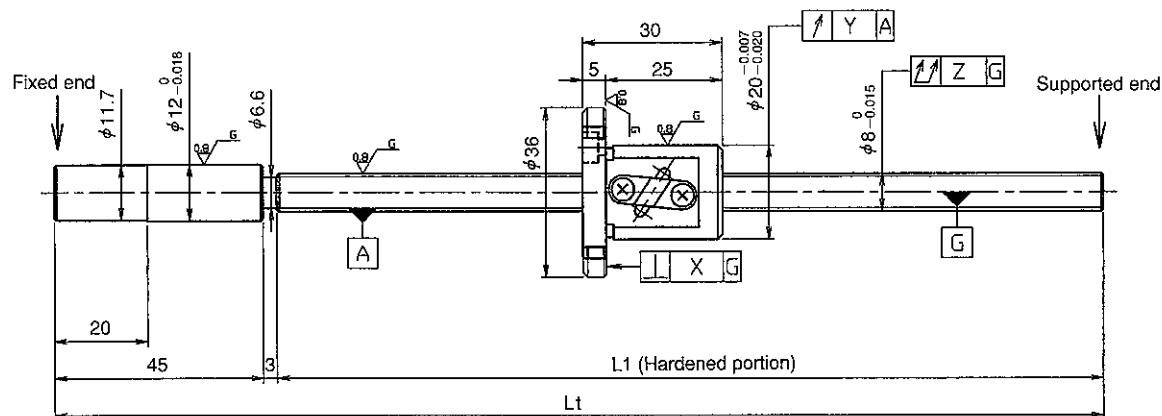
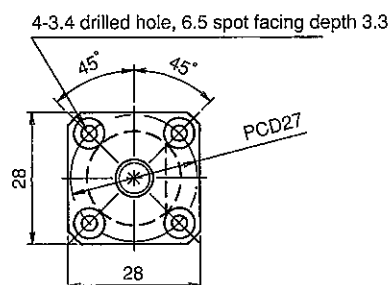


(Unit : mm)



●Standard length shaft without end machining

GG0802DS-AANR-□□□□A

●With end machining specified on your drawing

GE0802DS-ANR-X-C7M

GG0802DS-☐ANR-☐☐☐☐X☐☐☐☐-C5☐

Overall length	Thread length
1.00	0.50
1.25	0.75
1.50	1.00
1.75	1.25
2.00	1.50
2.25	1.75
2.50	2.00
2.75	2.25
3.00	2.50
3.25	2.75
3.50	3.00
3.75	3.25
4.00	3.50
4.25	3.75
4.50	4.00
4.75	4.25
5.00	4.50
5.25	4.75
5.50	5.00
5.75	5.25
6.00	5.50
6.25	5.75
6.50	6.00
6.75	6.25
7.00	6.50
7.25	6.75
7.50	7.00
7.75	7.25
8.00	7.50
8.25	7.75
8.50	8.00
8.75	8.25
9.00	8.50
9.25	8.75
9.50	9.00
9.75	9.25
10.00	9.50
10.25	9.75
10.50	10.00
10.75	10.25
11.00	10.50
11.25	10.75
11.50	11.00
11.75	11.25
12.00	11.50
12.25	11.75
12.50	12.00
12.75	12.25
13.00	12.50
13.25	12.75
13.50	13.00
13.75	13.25
14.00	13.50
14.25	13.75
14.50	14.00
14.75	14.25
15.00	14.50
15.25	14.75
15.50	15.00
15.75	15.25
16.00	15.50
16.25	15.75
16.50	16.00
16.75	16.25
17.00	16.50
17.25	16.75
17.50	17.00
17.75	17.25
18.00	17.50
18.25	17.75
18.50	18.00
18.75	18.25
19.00	18.50
19.25	18.75
19.50	19.00
19.75	19.25
20.00	19.50
20.25	19.75
20.50	20.00
20.75	20.25
21.00	20.50
21.25	20.75
21.50	21.00
21.75	21.25
22.00	21.50
22.25	21.75
22.50	22.00
22.75	22.25
23.00	22.50
23.25	22.75
23.50	23.00
23.75	23.25
24.00	23.50
24.25	23.75
24.50	24.00
24.75	24.25
25.00	24.50
25.25	24.75
25.50	25.00
25.75	25.25
26.00	25.50
26.25	25.75
26.50	26.00
26.75	26.25
27.00	26.50
27.25	26.75
27.50	27.00
27.75	27.25
28.00	27.50
28.25	27.75
28.50	28.00
28.75	28.25
29.00	28.50
29.25	28.75
29.50	29.00
29.75	29.25
30.00	29.50
30.25	29.75
30.50	30.00
30.75	30.25
31.00	30.50
31.25	30.75
31.50	31.00
31.75	31.25
32.00	31.50
32.25	31.75
32.50	32.00
32.75	32.25
33.00	32.50
33.25	32.75
33.50	33.00
33.75	33.25
34.00	33.50
34.25	33.75
34.50	34.00
34.75	34.25
35.00	34.50
35.25	34.75
35.50	35.00
35.75	35.25
36.00	35.50
36.25	35.75
36.50	

Model No.	Axial clearance	L ₁	L ₂	X	Y	Z	Preload torque (N・cm)	Lead accuracy			Wiper	Mass (kg)
								±Ec	ec	e300		
GE0802DS-AANR-0215A	~0.030 (M)	167	215	0.014	0.020	0.100	—	0.05	—	—	—	0.25
*GG0802DS-AANR-0215A	~0.005 (F)			0.010	0.012	0.065	~0.5	0.023	0.018	0.018		

- JIS B 1192-1987 (GG series) applies to accuracy standard values shown in the above-mentioned table.
- Support unit : BUK-8A (BUK-8F, BUK-6S) and BUM-8 is recommended. (Refer to P.398)
- Product with axial clearance ~0.005 (F) shown in the table may be partially preloaded.
- Preload torque shown in the table is a value before greasing.
- The grease is contained inside of nut only at the time of delivery. When using it, apply lubricant.
- For asterisked * model with unworked shaft ends equivalent to lead accuracy grade C3, contact KURODA.

Table of optional specifications for each model

Series	Additional machining of shaft end	Axial clearance adjustment (Note 2)	Surface treatment (Note 1)	Difference of grease	Direction of nut	Wiper removal
GE	○	×	○	○	○	—
GG	○	○	○	○	○	—

(Note 1) The above-mentioned surface treatment is LD treatment (coating thickness : 1 to 2 μm).

(Note 2) For axial clearance adjustment for GG series, contact KURODA.

Ball screw specifications

Screw shaft dia.	8	Axial clearance	~0.030 (M) ~0.005 (F)
Lead	2	Basic dynamic load rating	1950N
Thread direction	Right-hand	Basic static load rating	2600N
Number of circuits	2.5turn 1circuit	Spacer ball	—
Ball diameter	1.5875	Lubricant	Alvania Grease No.2

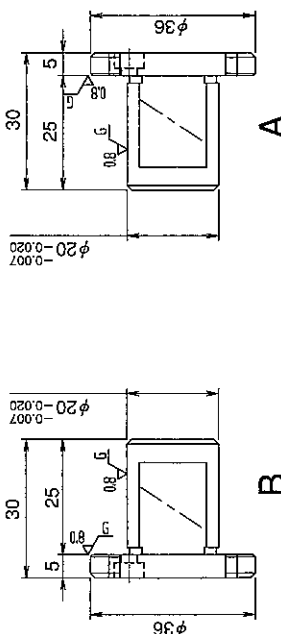
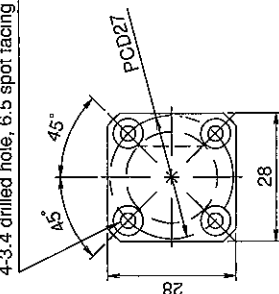
SHAFT END FINISH ORDERING SHEET

Screw shaft diameter $\phi 8$, Lead 2

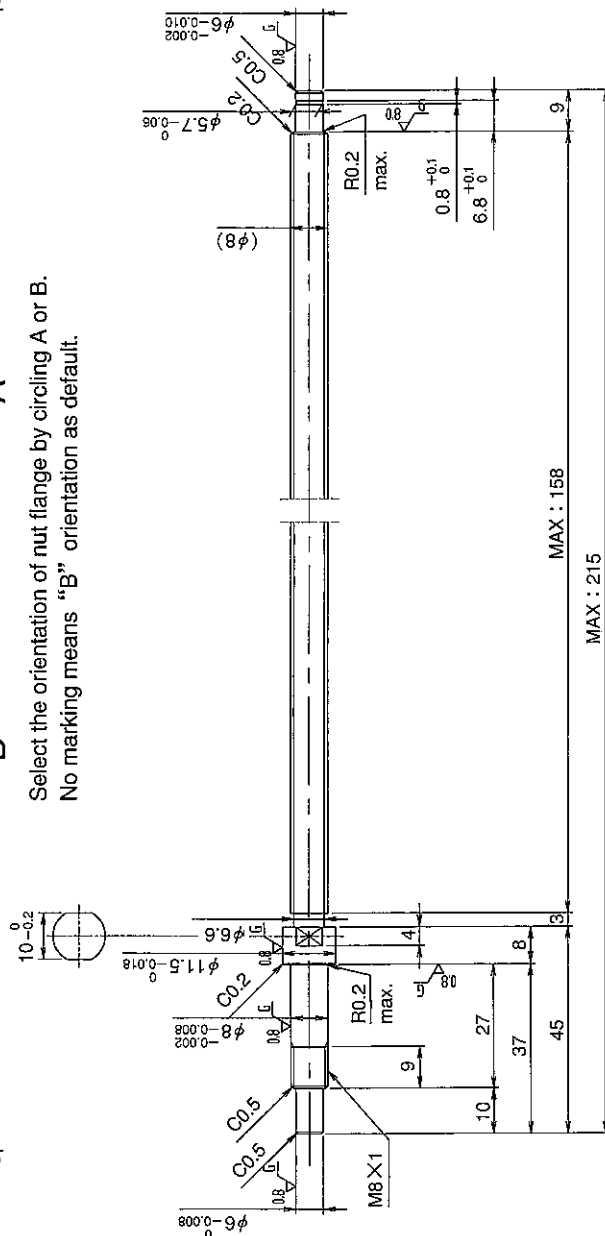
(Unit : mm)

GE0802DS-AANR- ☐ ☐ ☐ ☐ X ☐ ☐ ☐ ☐ -C7M
GG0802DS-AANR- ☐ ☐ ☐ ☐ X ☐ ☐ ☐ ☐ -C5

4-3.4 drilled hole, 6.5 spot facing depth 3.3



Select the orientation of nut flange by circling A or B.
No marking means "B" orientation as default.



Applicable Support Unit

Direct mount : BUK-8A (Fixed end unit+Supported end unit) Refer to Page.403

Circle flange : BUM-8 (Fixed end unit+Supported end bearing) Refer to Page.410

Company Name	
Telephone	
Company Address	

Refer to page 24 for NOTATION OF MODEL NUMBER.