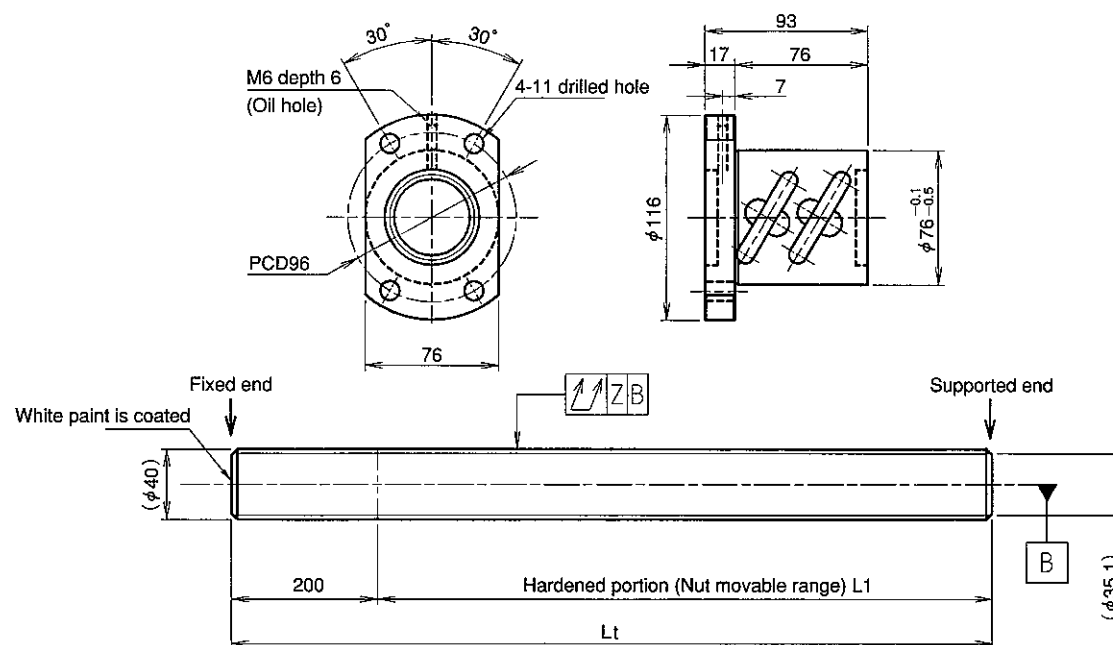


**KURODA** Standard Rolled Ball Screw : GY Series (Accuracy grade C10)

**UNFINISHED SHAFT ENDS**

 Screw shaft diameter  $\phi 40$ , Lead 10 (U nut)

(Unit : mm)


**Ball screw specifications**

Screw shaft dia.	40	Basic dynamic load rating	37100N
Lead	10	Basic static load rating	105600N
Thread direction	Right-hand	Lubricant	Alvania Grease No.2
Number of circuits	2.5turn 2circuit	Surface treatment	Phosphate coating
Ball diameter	6.350		

Model No.	Axial clearance	L <sub>1</sub>	L <sub>t</sub>	Z	Wiper
GY4010ES-HUBR-2000A	~0.200	1800	2000	0.240	Brush wiper
GY4010ES-HUBR-3000A		2800	3000	0.400	
GY4010ES-HUBR-4000A		3800	4000	0.640	

**Table of optional specifications for each model**

Additional machining of shaft end	Surface treatment (Note 1)	Difference of grease	Direction of nut	Wiper removal
○	○	○	○	○

(Note 1) The above-mentioned surface treatment is LD treatment (coating thickness : 1 to 2  $\mu$ m).

**Notation of standard rolled ball screw**

● Standard length shaft without end machining (Matched screw shaft and nut)

GY4010ES-HUBR-□□□□A

● Nut only without screw shaft

GY4010ES-HUBR

● Screw shaft only without end machining

GY4010ZZ-ZZZZ-□□□□D

● With end machining specified on your drawing (Matched screw shaft and nut)

GY4010ES-HUBR-□□□□X□□□□-CAY

● With end machining specified on your drawing (Screw shaft only)

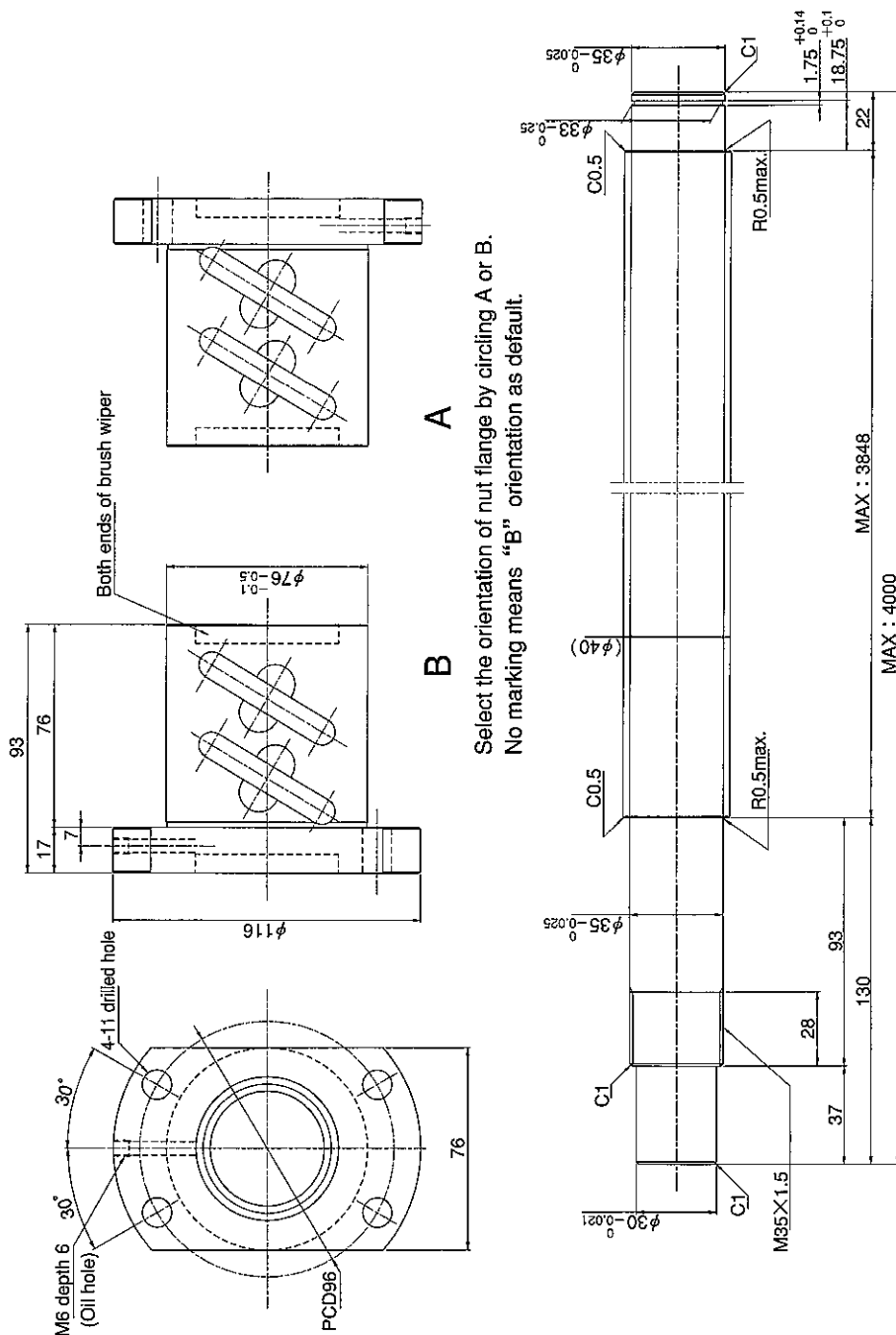
GY4010ZZ-ZZZZ-□□□□Y□□□□-CAY

Overall length    Thread length

Screw shaft diameter  $\phi 40$ , Lead 10 (U nut)

{Unit : mm}

GY4010ES-HUBR-		X			-CAY
----------------	--	---	--	--	------



Applicable Support Unit  
BUT-35(Fixed end unit) Refer to Page.421

Company Name		
Telephone		Name of Person in Charge
Company Address		

Refer to page 24 for NOTATION OF MODEL NUMBER.