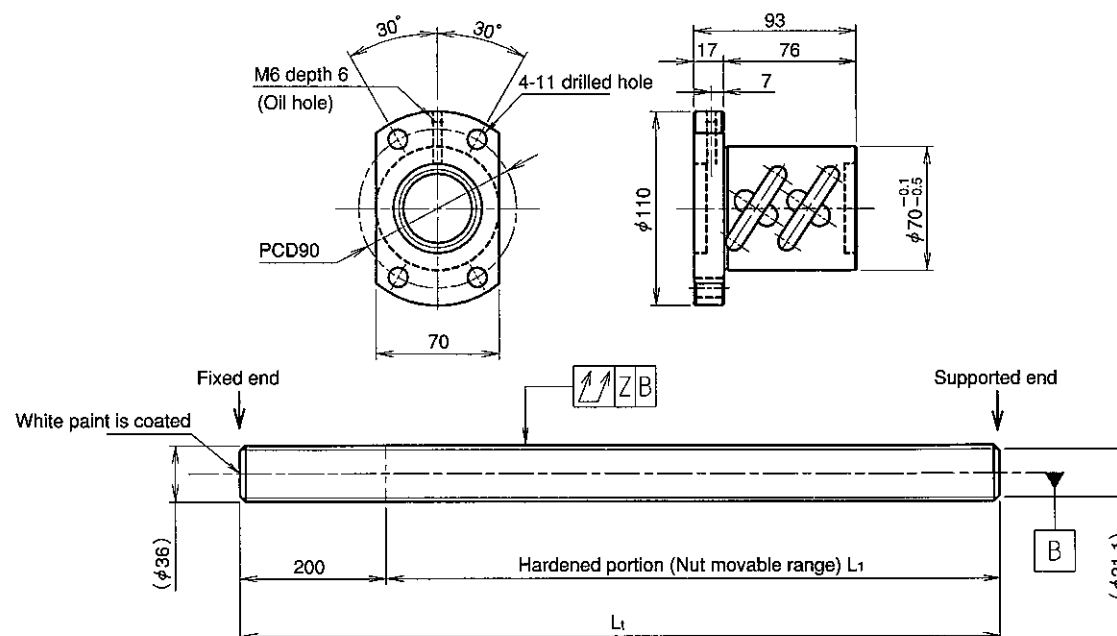


KURODA Standard Rolled Ball Screw : GY Series (Accuracy grade C10)

UNFINISHED SHAFT ENDS

 Screw shaft diameter $\phi 36$, Lead 10 (U nut)

(Unit : mm)


Ball screw specifications

Screw shaft dia.	36	Basic dynamic load rating	35100N
Lead	10	Basic static load rating	98200N
Thread direction	Right-hand	Lubricant	Alvania Grease No.2
Number of circuits	2.5turn 2circuit	Surface treatment	Phosphate coating
Ball diameter	6.350		

Model No.	Axial clearance	L ₁	L _t	Z	Wiper
GY3610ES-HUBR-1000A	~0.200	800	1000	0.120	Brush wiper
GY3610ES-HUBR-2000A		1800	2000	0.240	
GY3610ES-HUBR-3000A		2800	3000	0.630	

Table of optional specifications for each model

Additional machining of shaft end	Surface treatment (Note 1)	Difference of grease	Direction of nut	Wiper removal
○	○	○	○	○

(Note 1) The above-mentioned surface treatment is LD treatment (coating thickness : 1 to 2 μ m).

Notation of standard rolled ball screw

● Standard length shaft without end machining (Matched screw shaft and nut)
 GY3610ES-HUBR-□□□□A
 ● Nut only without screw shaft
 GY3610ES-HUBR-□□□□
 ● Screw shaft only without end machining
 GY3610ZZ-ZZZZ-□□□□D

● With end machining specified on your drawing (Matched screw shaft and nut)
 GY3610ES-HUBR-□□□□X□□□□-CAY
 ● With end machining specified on your drawing (Screw shaft only)
 GY3610ZZ-ZZZZ-□□□□Y□□□□-CAY

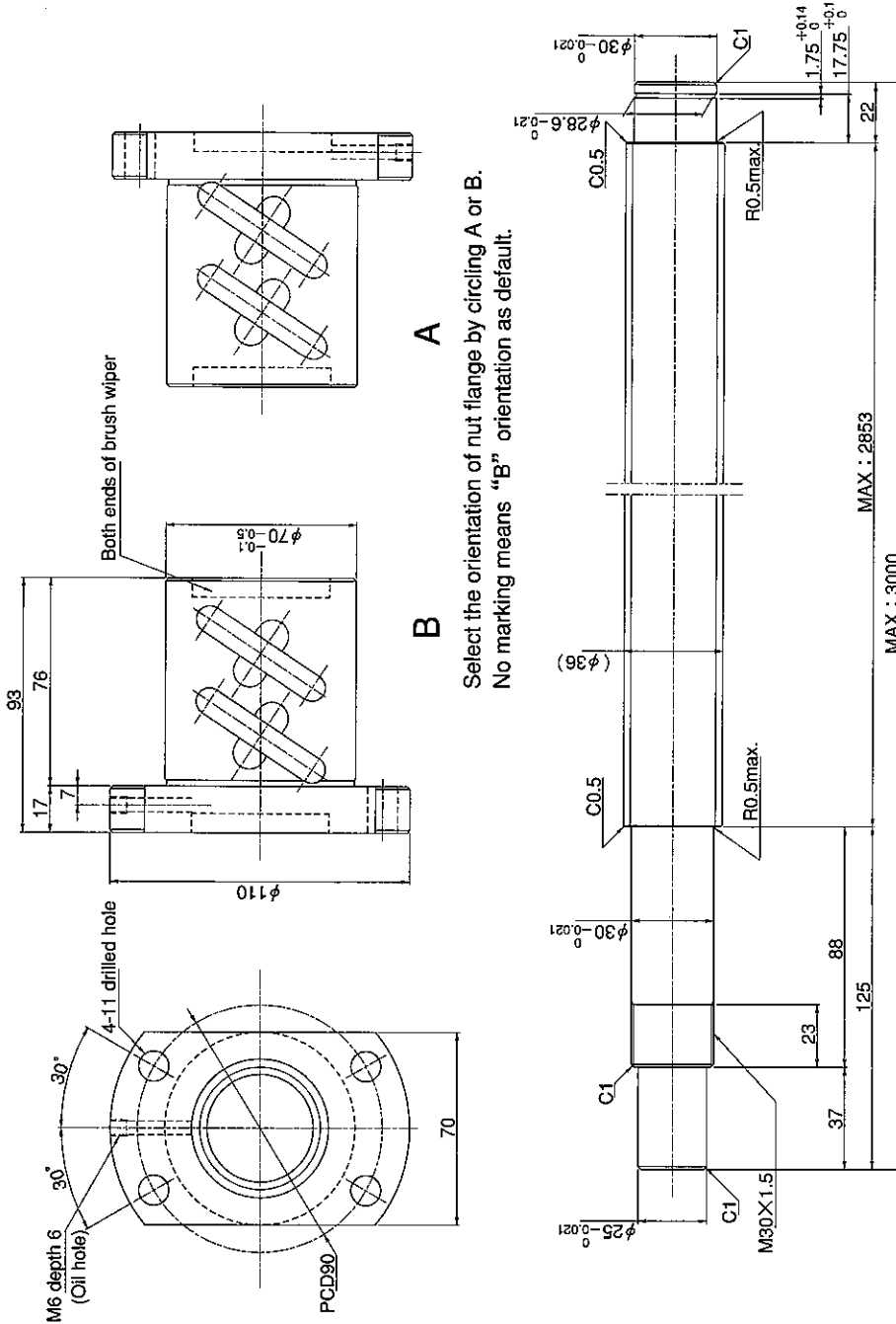
Overall length Thread length

SHAFT END FINISH ORDERING SHEET

Screw shaft diameter $\phi 36$, Lead 10 (U nut)

(Unit : mm)

GY3610ES-HUBR- X -CAY



Select the orientation of nut flange by circling A or B.
No marking means "B" orientation as default.

Applicable Support Unit
BUT-30 (Fixed end unit) Refer to Page 420

Company Name	
Telephone	
Company Address	
Name of Person in Charge	