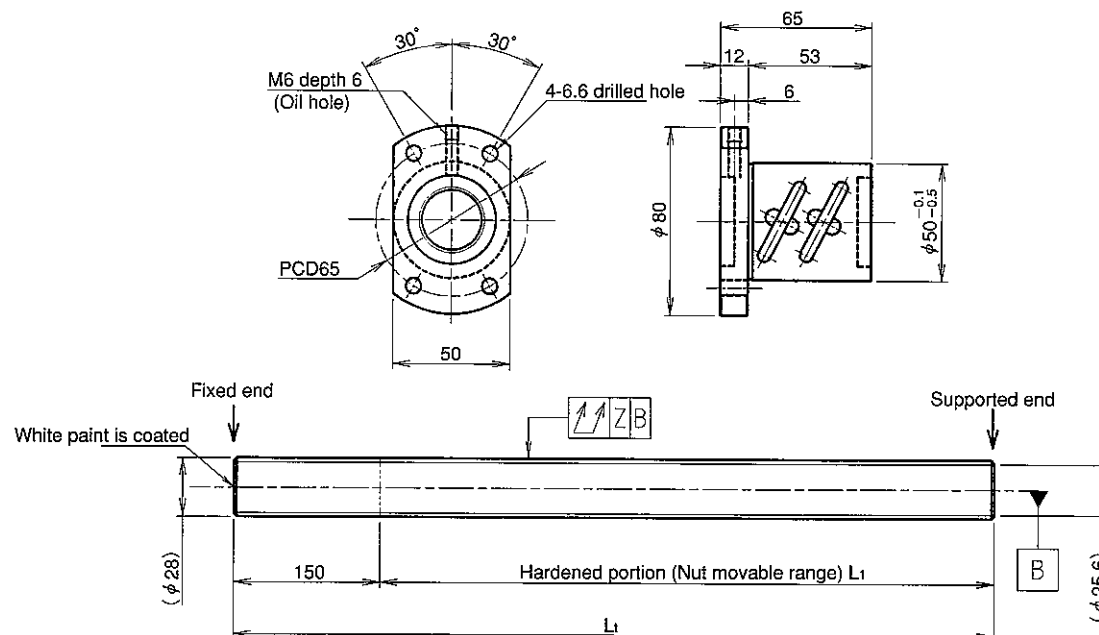


KURODA Standard Rolled Ball Screw : GY Series (Accuracy grade C10)

UNFINISHED SHAFT ENDS

 Screw shaft diameter $\phi 28$, Lead 6 (U nut)

(Unit : mm)


Ball screw specifications

Screw shaft dia.	28	Basic dynamic load rating	12100N
Lead	6	Basic static load rating	42300N
Thread direction	Right-hand	Lubricant	Alvania Grease No.2
Number of circuits	2.5turn 2circuit	Surface treatment	Phosphate coating
Ball diameter	3.175		

Model No.	Axial clearance	L ₁	L ₁	Z	Wiper
GY2806ES-HUBR-1000A	~0.100	850	1000	0.120	Brush wiper
GY2806ES-HUBR-2000A		1850	2000	0.240	
GY2806ES-HUBR-2500A		2350	2500	0.640	

Table of optional specifications for each model

Additional machining of shaft end	Surface treatment (Note 1)	Difference of grease	Direction of nut	Wiper removal
○	○	○	○	○

(Note 1) The above-mentioned surface treatment is LD treatment (coating thickness : 1 to 2 μ m).

Notation of standard rolled ball screw

- Standard length shaft without end machining (Matched screw shaft and nut)
GY2806ES-HUBR-□□□□A
- Nut only without screw shaft
GY2806ES-HUBR
- Screw shaft only without end machining
GY2806ZZ-ZZZZ-□□□□D

- With end machining specified on your drawing (Matched screw shaft and nut)
GY2806ES-HUBR-□□□□X□□□□-CAY
- With end machining specified on your drawing (Screw shaft only)
GY2806ZZ-ZZZZ-□□□□Y□□□□-CAY

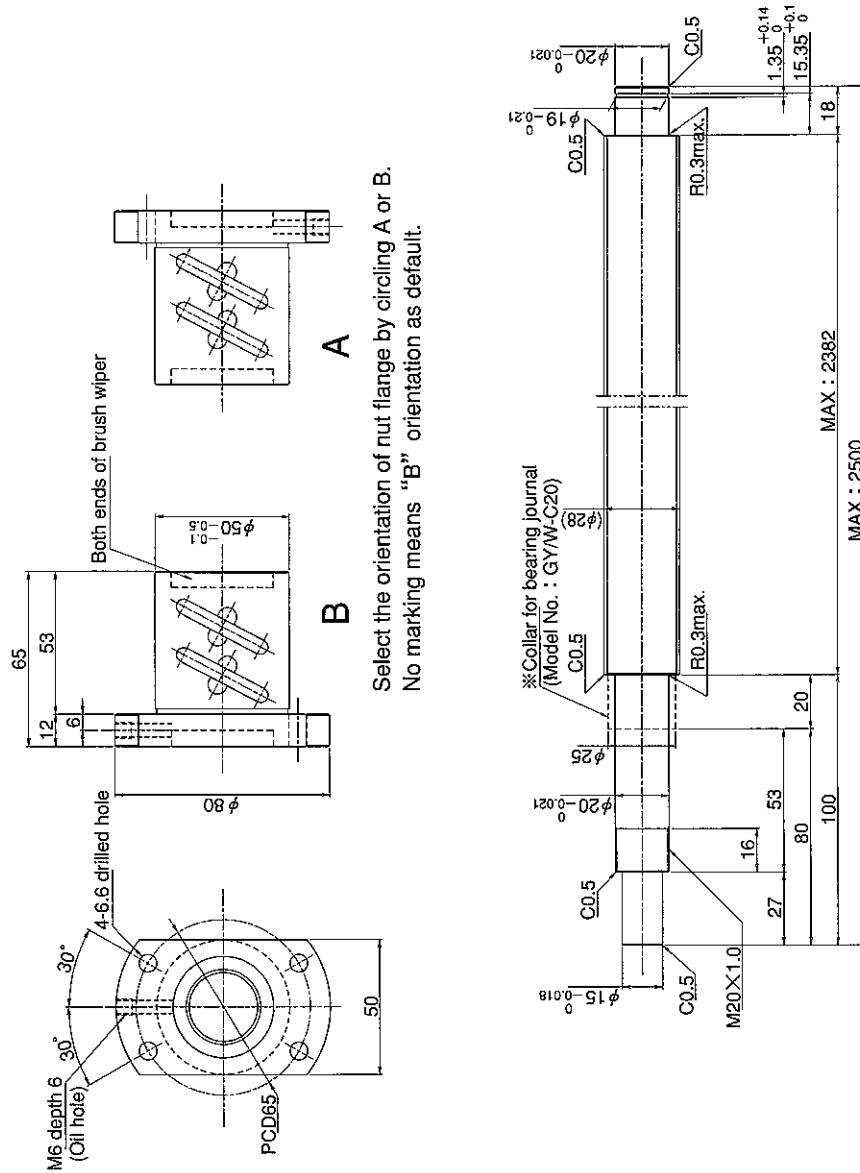
Overall length Thread length

SHAFT END FINISH ORDERING SHEET

Screw shaft diameter $\phi 28$, Lead 6 (U nut)

(Unit : mm)

GY2806ES-HUBR- X -CAY



Select the orientation of nut flange by circling A or B.
No marking means "B" orientation as default.

※ Please place an order for collar separately.

Applicable Support Unit

Direct mount : BUK-20A (Fixed end unit+Supported end unit) Refer to Page.407

Circle flange : BUM-20 (Fixed end unit+Supported end bearing) Refer to Page.414

Company Name	
Telephone	
Company Address	
Name of Person in Charge	

Refer to page 24 for NOTATION OF MODEL NUMBER.