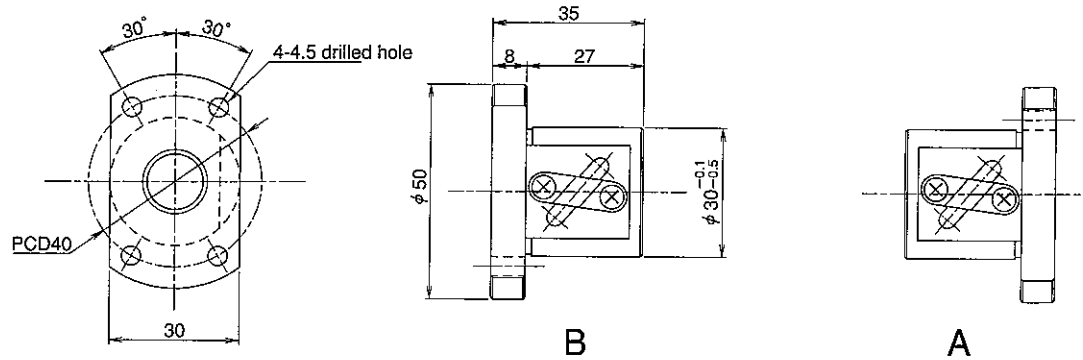


SHAFT END FINISH ORDERING SHEET

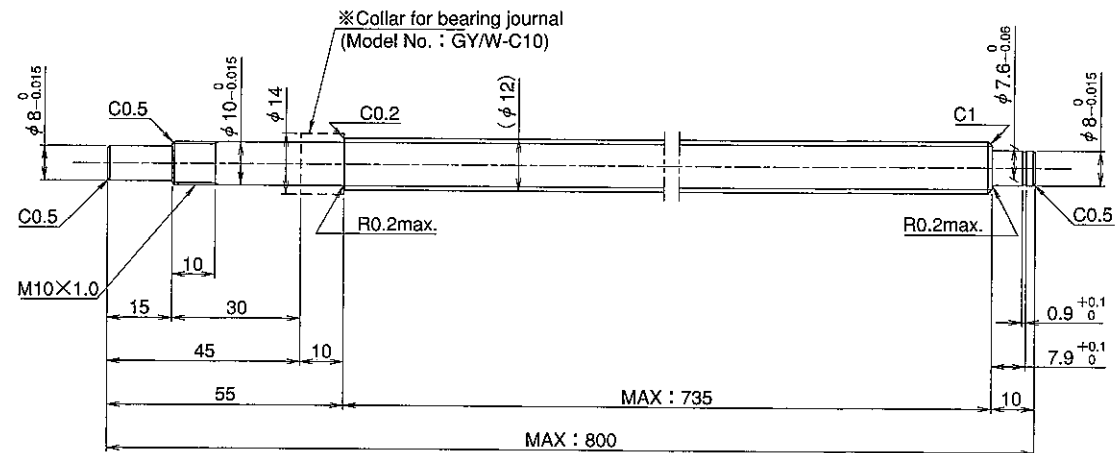
Screw shaft diameter $\phi 12$, Lead 4 (M nut)

(Unit : mm)

GY1204DS-HANR- X -CAY



Select the orientation of nut flange by circling A or B.
No marking means "B" orientation as default.



※Please place an order for collar separately.

Applicable Support Unit

Direct mount : BUK-10A (Fixed end unit+Supported end unit) Refer to Page.404

Circle flange : BUM-10 (Fixed end unit+Supported end bearing) Refer to Page.411

Company Name			
Telephone		Name of Person in Charge	
Company Address			