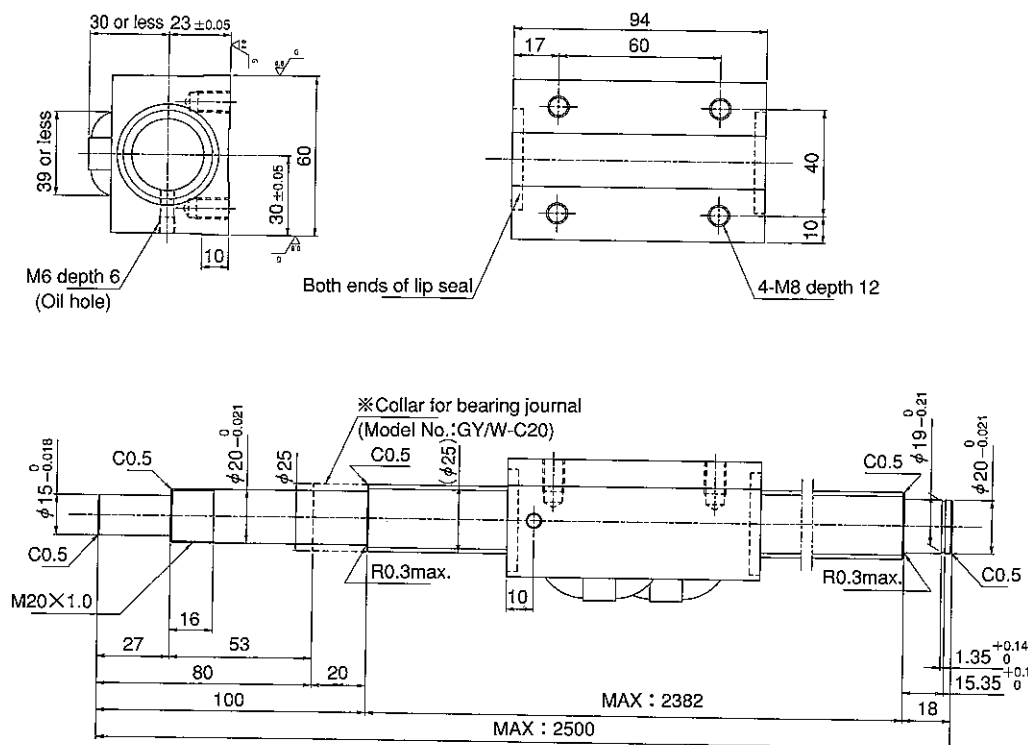


## SHAFT END FINISH ORDERING SHEET

Screw shaft diameter  $\phi 25$ , Lead 10 (K nut)

(Unit : mm)

GW2510ES-NKLR-     X     -C7Y

※Please place an order for collar separately.

Applicable Support Unit

Direct mount : BUK-20A (Fixed end unit+Supported end unit) Refer to Page.407

Circle flange : BUM-20 (Fixed end unit+Supported end bearing) Refer to Page.414

Company Name	
Telephone	Name of Person in Charge
Company Address	