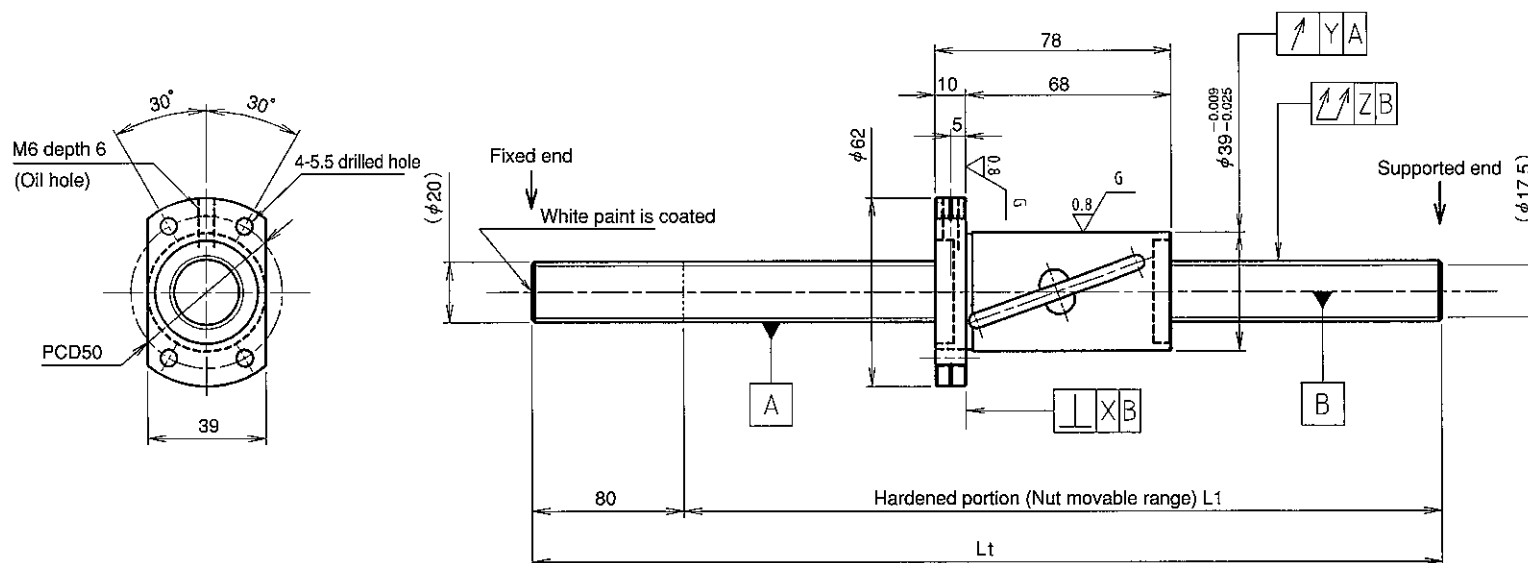


KURODA Standard Rolled Ball Screw : GW Series (Accuracy grade C7)

UNFINISHED SHAFT ENDS

 Screw shaft diameter $\phi 20$, Lead 20 (U nut)

(Unit : mm)


Ball screw specifications

Screw shaft dia.	20	Basic dynamic load rating	6200N
Lead	20	Basic static load rating	14700N
Thread direction	Right-hand	Lubricant	Alvania Grease No.2
Number of circuits	2.5turn 1circuit	Surface treatment	Without
Ball diameter	3.175		

Model No.	Axial clearance	L ₁	L _t	X	Y	Z	Wiper
GW2020DS-HULR-0600A	~0.030	520	600	0.025	0.025	0.070	Lip seal
GW2020DS-HULR-1200A		1120	1200			0.120	
GW2020DS-HULR-2000A		1920	2000			0.270	

Table of optional specifications for each model

Additional machining of shaft end	Surface treatment (Note 1)	Difference of grease	Direction of nut	Wiper removal
○	○	○	○	○

(Note 1) The above-mentioned surface treatment is LD treatment (coating thickness : 1 to 2 μ m).

Notation of standard rolled ball screw

● Standard length shaft without end machining

GW2020DS-HULR-□□□□A

● With end machining specified on your drawing

GW2020DS-HULR-□□□□X□□□□-C7Y

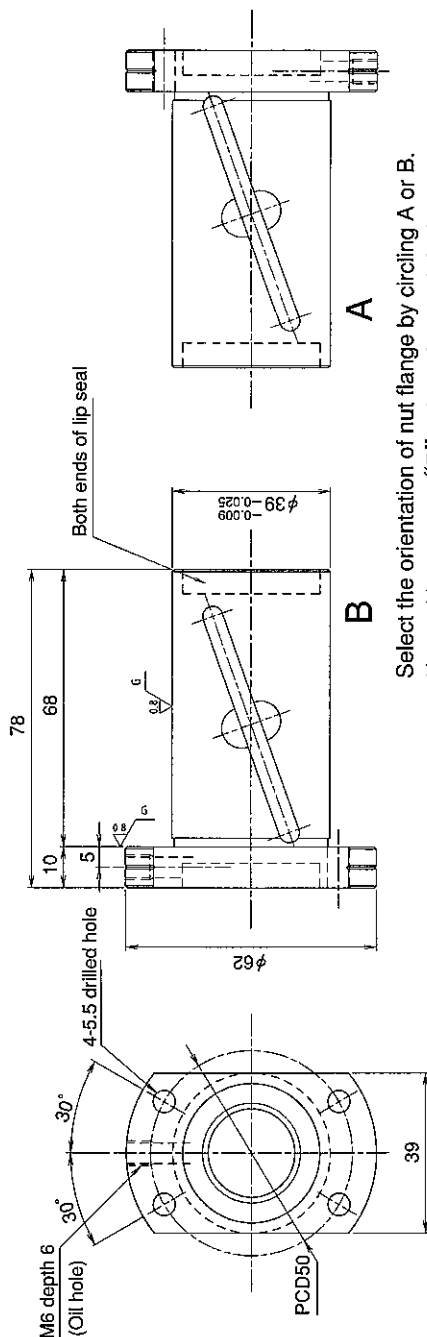
Overall length Thread length

SHAFT END FINISH ORDERING SHEET

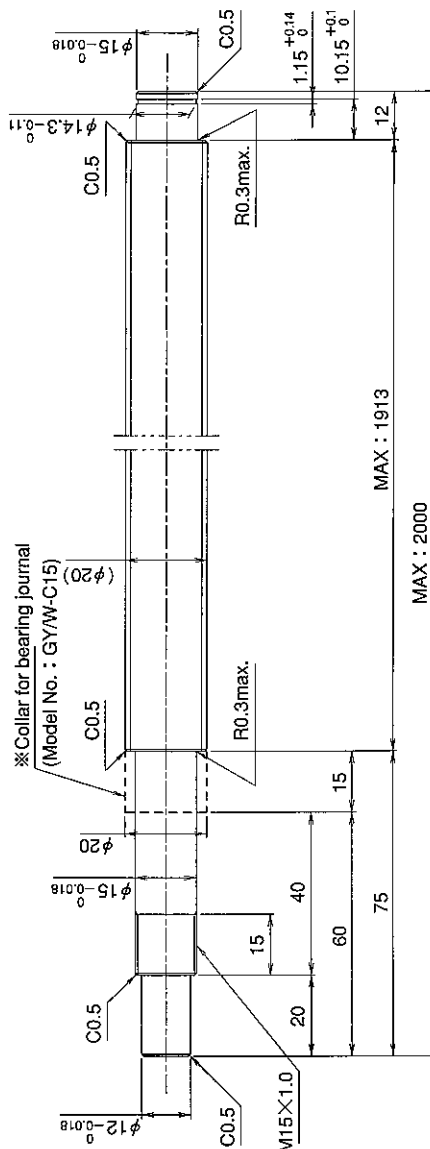
Screw shaft diameter $\phi 20$, Lead 20 (U nut)

(Unit : mm)

GW2020DS-HULR- X -C7Y



Select the orientation of nut flange by circling A or B.
No marking means "B" orientation as default.



※Please place an order for collar separately.

Applicable Support Unit

Direct mount : BUK-15A (Fixed end unit+Supported end unit) Refer to Page.406

Circle flange : BUM-15 (Fixed end unit+Supported end bearing) Refer to Page.413

Company Name	
Telephone	Name of Person in Charge
Company Address	