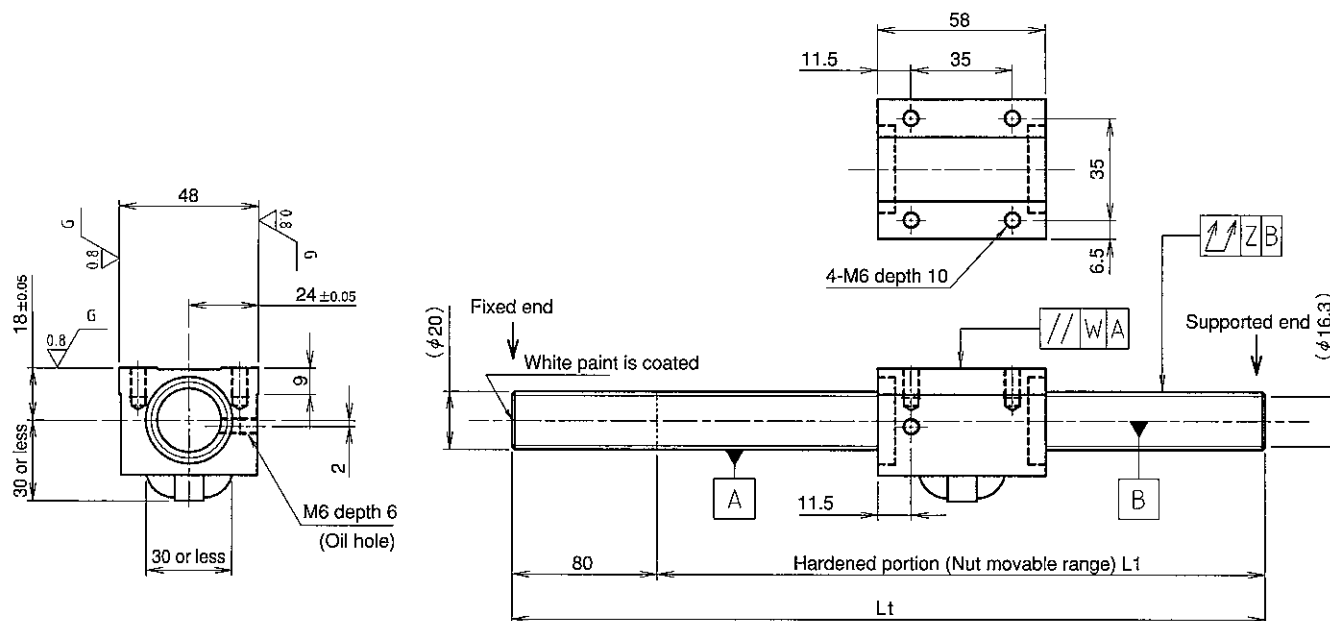


KURODA Standard Rolled Ball Screw : GW Series (Accuracy grade C7)

UNFINISHED SHAFT ENDS

 Screw shaft diameter $\phi 20$, Lead 10 (K nut)

(Unit : mm)


Ball screw specifications

Screw shaft dia.	20	Basic dynamic load rating	10600N
Lead	10	Basic static load rating	22700N
Thread direction	Right-hand	Lubricant	Alvania Grease No.2
Number of circuits	2.5turn 1circuit	Surface treatment	Phosphate coating (Nut only)
Ball diameter	4.7625		

Model No.	Axial clearance	L ₁	L _t	W	Z	Wiper
GW2010DS-NKLR-0600A	~0.050	520	600	0.017	0.070	Lip seal
GW2010DS-NKLR-1200A		1120	1200		0.120	
GW2010DS-NKLR-2000A		1920	2000		0.270	

Table of optional specifications for each model

Additional machining of shaft end	Surface treatment (Note 1)	Difference of grease	Direction of nut	Wiper removal
○	○	○	○	○

(Note 1) The above-mentioned surface treatment is LD treatment (coating thickness : 1 to 2 μ m).

Notation of standard rolled ball screw

● Standard length shaft without end machining

GW2010DS-NKLR-□□□□A

● With end machining specified on your drawing

GW2010DS-NKLR-□□□□X□□□□-C7Y

Overall length Thread length