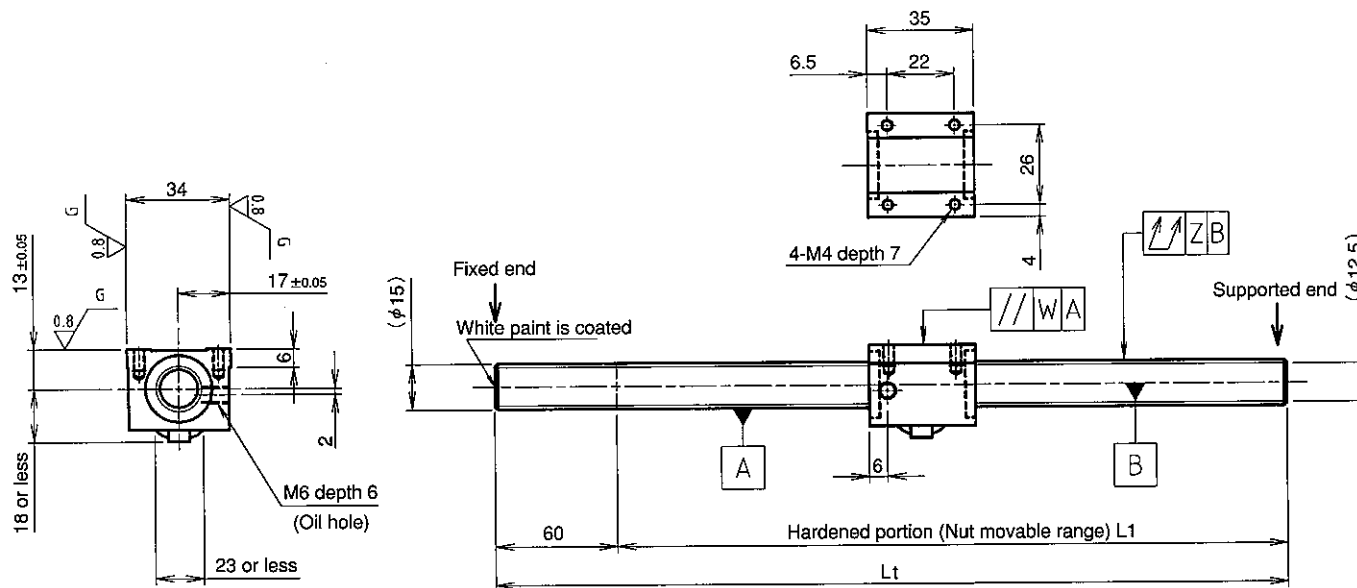


UNFINISHED SHAFT ENDS

Screw shaft diameter $\phi 15$, Lead 5 (K nut)

(Unit : mm)



Ball screw specifications

Screw shaft dia.	15	Basic dynamic load rating	5100N
Lead	5	Basic static load rating	10500N
Thread direction	Right-hand	Lubricant	Alvania Grease No.2
Number of circuits	2.5turn 1circuit	Surface treatment	Phosphate coating (Nut only)
Ball diameter	3.175		

Model No.	Axial clearance	L ₁	L _t	W	Z	Wiper
GW1505DS-NKLR-0600A	~0.030	540	600	0.017	0.070	Lip seal
GW1505DS-NKLR-1200A		1140	1200		0.170	

Table of optional specifications for each model

Additional machining of shaft end	Surface treatment (Note 1)	Difference of grease	Direction of nut	Wiper removal
○	○	○	○	○

(Note 1) The above-mentioned surface treatment is LD treatment
(coating thickness : 1 to 2 μ m).

Notation of standard rolled ball screw

- Standard length shaft without end machining
GW1505DS-NKLR-□□□□A
- With end machining specified on your drawing
GW1505DS-NKLR-□□□□X□□□□-C7Y

Overall length Thread length