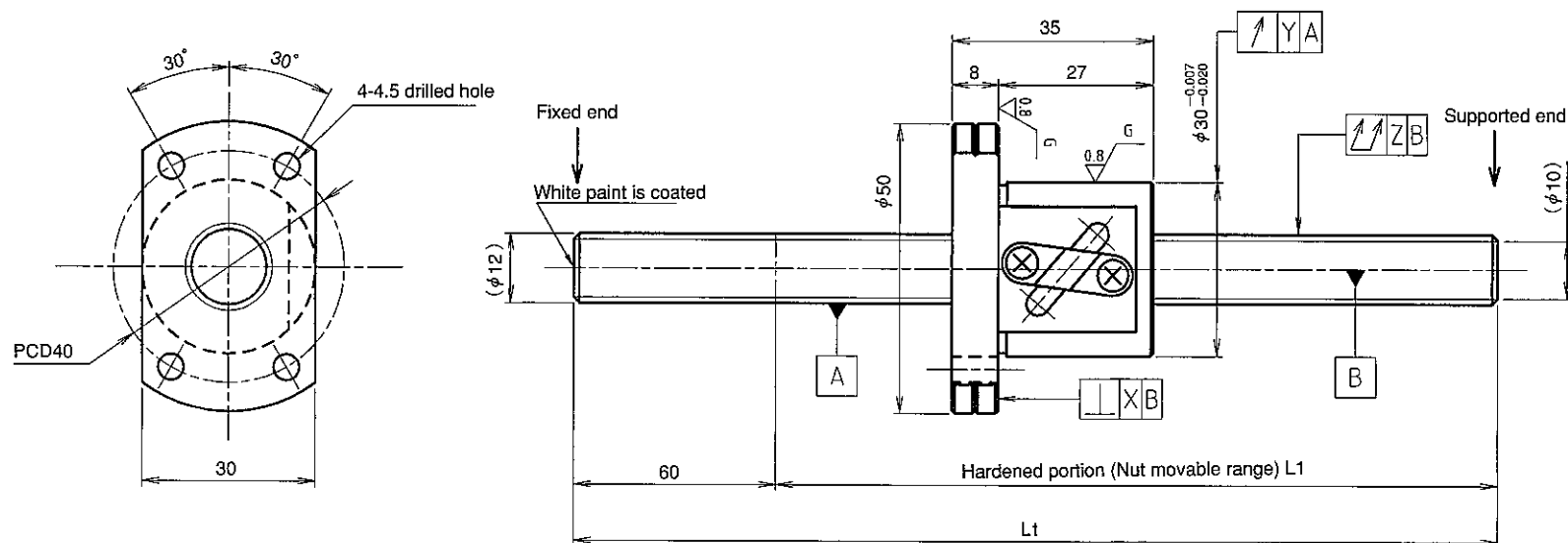


(Unit : mm)



Screw shaft dia.	12	Basic dynamic load rating	2600N
Lead	4	Basic static load rating	5800N
Thread direction	Right-hand	Lubricant	Alvania Grease No.2
Number of circuits	2.5turn 1circuit	Surface treatment	Without
Ball diameter	2.3812		

Model No.	Axial clearance	L <sub>1</sub>	L <sub>t</sub>	X	Y	Z	Wiper
GW1204DS-HANR-0400A	~0.030	340	400	0.020	0.020	0.080	Without
GW1204DS-HANR-0800A		740	800			0.200	

Additional machining of shaft end	Surface treatment (Note 1)	Difference of grease	Direction of nut
○	○	○	○

(Note 1) The above-mentioned surface treatment is LD treatment (coating thickness : 1 to 2  $\mu\text{m}$ ).

● Standard length shaft without end machining  
GW1204DS-HANR-□□□□A

● With end machining specified on your drawing  
GW1204DS-HANR-□□□□X□□□□-C7Y

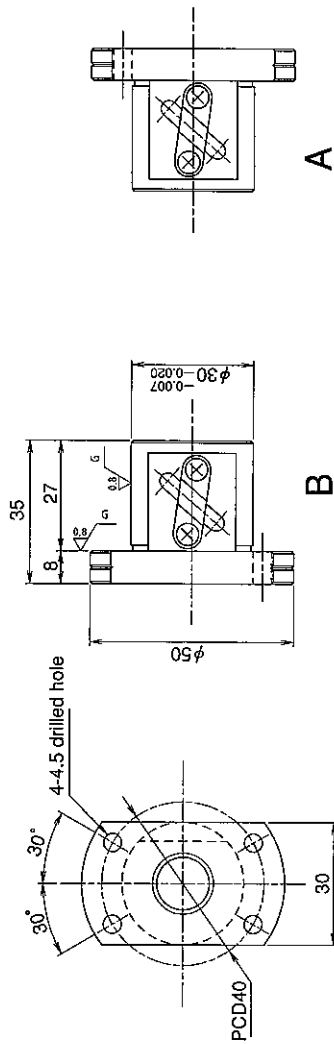
Overall length      Thread length

# SHAFT END FINISH ORDERING SHEET

Screw shaft diameter  $\phi 12$ , Lead 4 (M nut)

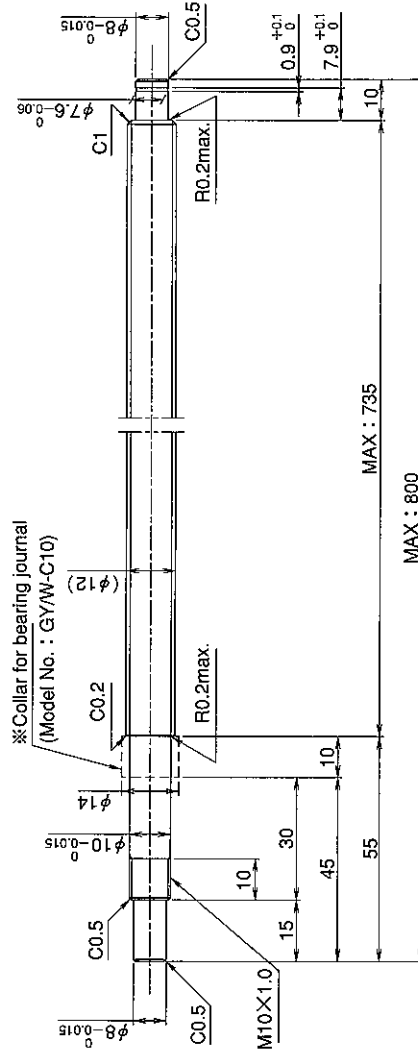
(Unit : mm)

GW1204DS-HANR-   X    -C7Y



A

Select the orientation of nut flange by circling A or B.  
No marking means "B" orientation as default.



※Please place an order for collar separately.

Applicable Support Unit

Direct mount : BUK-10A (Fixed end unit+Supported end unit) Refer to Page.404

Circle flange : BUM-10 (Fixed end unit+Supported end bearing) Refer to Page.411

Company Name	
Telephone	Name of Person in Charge
Company Address	