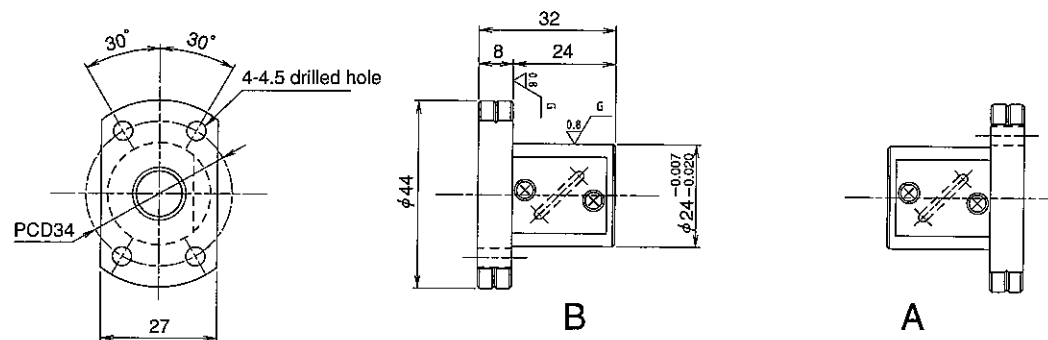


SHAFT END FINISH ORDERING SHEET

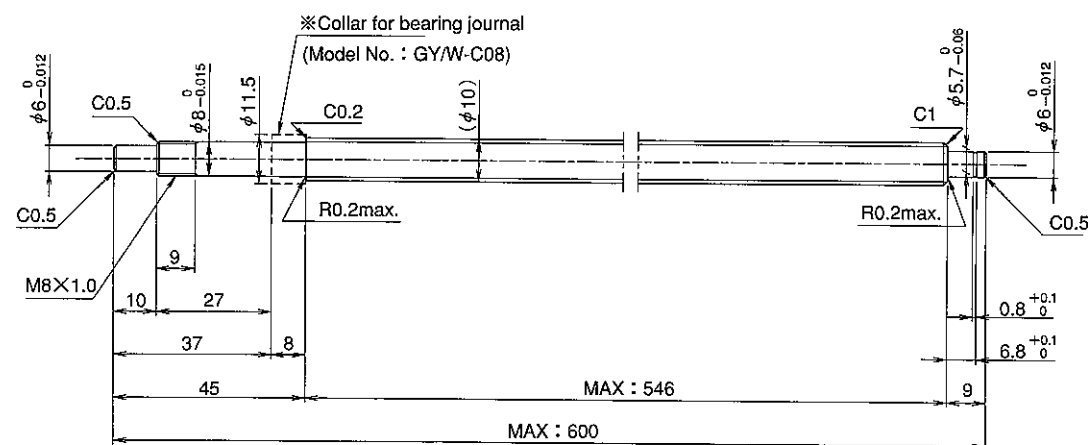
Screw shaft diameter $\phi 10$, Lead 2.5 (M nut)

(Unit : mm)

GW102FGS-HGNR- X -C7Y



Select the orientation of nut flange by circling A or B.
No marking means "B" orientation as default.



※Please place an order for collar separately.

Applicable Support Unit

Direct mount : BUK-8A (Fixed end unit+Supported end unit) Refer to Page.403

Circle flange : BUM-8 (Fixed end unit+Supported end bearing) Refer to Page.410

Company Name		
Telephone		Name of Person in Charge
Company Address		